



隔爆型三项异步电动机

Flame-proof three phase induction motors

东元YB3隔爆电动机

Teco YB3 Flame-proof motos

JB/T7565.1-2011

GB3836.1 GB3836.2-2010

GB18613-2012 GB3/IE2

上海东元德高电机有限公司(中国区销售总部)
地址: 上海市长宁区中山西路1279弄6号321室
电话: 021-51168255 传真: 021-32098761
Web: <http://www.tecochina.net>

销售点:

南昌 电话: 0791-88195999 传真: 0791-88167730

东莞 电话: 0769-85243625 传真: 0769-85243695

厦门 电话: 0592-5703299 传真: 0592-5703311

天津 电话: 022-23859622 传真: 022-23859623

四川 电话: 028-61304688 传真: 028-61304699

北京 电话: 010-56378611 传真: 010-56378611



型号TSH-XLGE-004
DY-2013-10-01
Ver.01

<http://www.tecochina.net>



东元集团
www.tecochina.net

contents

TECO, a famous globalize enterprise group, share the third in global industrial motor of the world; and it has successfully diversified into a highly competitive development conglomerate with worldwide business operations including heavy electrical, home appliance, electronics, IT system, telecommunications equipment, financial investment from the motor giant enterprises. TECO Group currently has nearly hundred oversea affiliates and subsidiaries, and the total global employee amount is over tens of thousands. It has a wide range technology cooperation with many world famous enterprises, such as GE, Japan Yaskawa, the U.S. Westinghouse, Siemens of Germany, Japan, Hitachi, Mitsubishi and so on, its business territory has been extended to Asia, America, Europe, Australia, and became known as a well-known World Group, TECO had become an international brand.

In order to integrate management and provide services for the motor sales of TECO in China, especially set up Shanghai TECO Electric & Machinery Co., Ltd in August of 2012. And Shanghai TECO integrated four manufactories base that located in Suzhou, Wuxi, Jangxi, Fujian co-ordinate marketing services for the customers in China. Shanghai TECO Electric & Machinery Co., Ltd is one of the subsidiaries of Taiwan TECO Electric and Machinery, is also the sales headquarters in mainland China and specializing in marketing various motors. Now the sales range of introduction motors had across the country, the strength of motor development range is available in low, medium and high voltage (up to 13,800 volts) premium efficiency and high performance motors, range from 1/4HP to 60,000 HP. At the same time as the only sales window of the TECO Group in mainland, Shanghai TECO sales all the motors such as asynchronous, synchronous, DC motors which produced by Taiwan TECO, TECO Westinghouse and other overseas factories.

Shanghai TECO Electric & Machinery Co., Ltd provides customers with world-class products and satisfactory services based on its advanced technology and good management.

For any technical questions, specific applications certified dimensions and performance data, etc., please contact our TECO representatives.

Shanghai Teco Electric & Machinery Co., Ltd.

Add : Room 321, Building NO.6, Lane 1279 Zhongshan W.Rd,Shanghai, Post 200051,PRC

TEL: 021-51168255 FAX: 021-32098761

Web: <http://www.tecochina.net>



<http://www.tecochina.net>

东元集团简介

东元集团目前全球工业马达占有率名列前茅，位于世界第三；并从电机巨人企业发展为横跨重电、家电、电子、资讯、通讯、金融投资等六个产业群的具有高度竞争力的多元化经营的企业集团。东元集团目前计约近百家海外关系企业，分布在全球的东元员工达万人以上，并广泛与世界著名企业美国 GE、日本安川、美国西屋、德国西门子、日本日立、三菱等进行机电技术合作，其事业版图已扩展至亚洲、美洲、欧洲、澳洲，成为知名的世界集团，TECO 已成为国际品牌。

为统筹管理服务东元电机于中国区马达的销售，特于 2012 年 8 月成立上海东元德高电机有限公司，整合东元在苏州、无锡、江西、福建四大电机生产基地，统筹营销服务中国用户。上海东元是台湾东元电机集团的子公司之一，亦是东元在中国大陆的销售总部，专业从事电机的销售工作，目前异步电动机的销售范围已辐射全国各地，拥有从 1/4HP 到 60,000HP 低中高压马达与 13,800V 超高电压完整范围的马达研制实力。同时作为东元集团在大陆的唯一销售视窗，提供台湾东元，美国东元西屋等海外工厂生产的异步，同步，直流等各种电动机。上海东元德高电机有限公司以先进的技术，良好的管理向客户提供国际一流的产品和满意的服务。

如您有任何技术问题或需要正式的马达外形尺寸图、规范表、特性等资料，请就近洽询我们当地的业务代表。

上海东元德高电机有限公司(中国区销售总部)

上海东元德高电机有限公司

地址：上海市长宁区中山西路 1279 弄 6 号 321 室

电话：021-51168255 传真：021-32098761

Web: <http://www.tecochina.net>

所列产品内容仅供您参考，如有变更将不另行通知。

All date presented is for reference only and subject to change without notice.



东元历史

稳健、创新、突破

- 1956年 东元电机股份有限公司成立于重庆市。
- 1965年 新庄厂设置为全国第一座自动化马达生产工厂。
- 1966年 工具工厂成立（现为生产技术处）。
- 1973年 淡水厂启用，生产冷气机、电视机、电冰箱等家电产品。
- 1979年 中坜一厂建厂完成，导入最新自动化设备生产马达。
- 1983年 观音厂启用，生产电视机、高级电子产品及电脑周边设备。
- 1987年 中坜二厂建厂完成，与西屋合作生产超大型马达。
- 1991年 观音冷气厂建厂完成，导入全新自动化生产家电产品。
- 1991年 马来西亚厂建厂完成。
- 1994年 观音压缩机厂建厂完成。
- 1995年 购并美国西屋（WESTINGHOUSE）马达厂。
- 2000年 苏州东元电机建厂。
- 2002年 无锡东元电机建厂。
- 2003年 无锡东元正式投产。
- 2004年 无锡东元金一厂建厂。
- 2004年 江西东元电机建厂。
- 2008年 福建东元电机建厂。

认证证书



隔爆型三项异步电动机

Flame-proof three phase induction motors



目录 Contents

东元YB3隔爆电动机 Teco YB3 Flame-proof Motors

使用场所 Location of Exd motors	1~2
技术数据 Technical date	3
适用条件 Applicationt	3
电机特点 Character	4~8
铭牌及证书对照表 Nameplate and Certificate	9~10

特性表 Data Sheet

标准电机 Standard Motor 380V 50HZ Model: YB3	11~14
---	-------

外形图 Outline

IMB3	15~19
IMB5	20~23
IMV1	24~27
IMB35	28~32

防爆电机使用场所

1. 场所

防爆电机主要用于煤矿、石油天然气、石油化工和化学工业。此外，在纺织、冶金、城市煤气、交通、粮油加工、造纸、医药等部门也被广泛应用。

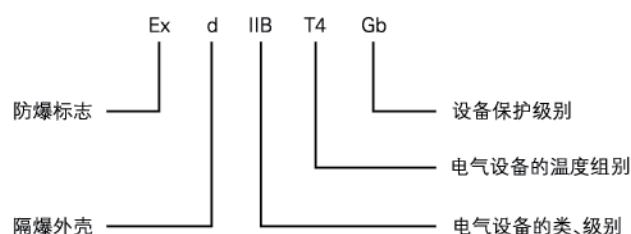
以上行业在生产过程中有可能产生各种可燃性气体或蒸汽等，这些物质与空气混合后就形成了“爆炸性气体混合物”。如果这种混合物处于爆炸的温度，又遇有火源时，就会引起爆炸。

东元的 YB3 属于“Exd”型隔爆电机，其外壳能承受通过外壳任何接合面或结构间隙渗透到外壳内部的可燃性混合物在内部不操作，并且不会引起外部由一样、多种气体或蒸汽形成的爆炸性气体环境的点燃。

2. 防爆危险区域划分

区域	区域定义	运用的防爆电机
0 区	爆炸性区域	目前无适合的防爆电机
1 区	容易爆炸区域	隔爆型“d”
2 区	偶然爆炸区域	隔爆型“d”，增安型“d”，无火花型“nA”电机

3. 防爆标志 Ex d IIB T4 Gb 的含义



4. 爆炸性气体混合物分组表

在中国和 IEC 国家，爆炸性物质分为三类：

- I 类：矿井甲烷
- II 类：爆炸性气体混合物（含蒸汽、薄雾）
- III 类：爆炸性粉尘和纤维

Location of exd motors

1. Location

Explosion proof motor is mainly used in coal mine, petroleum, petrochemical and chemical industry. In addition, in the textile, metallurgy, city gas, transportation, grain and oil processing, paper making, medicine and other departments have also been widely used.

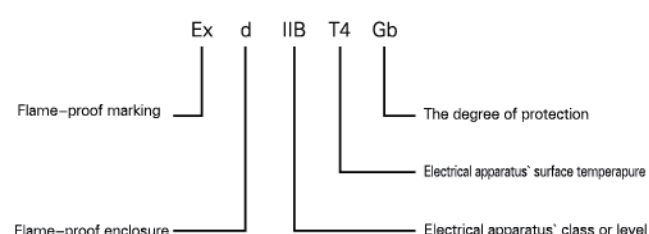
Above the industry in the process of production may lead to inflammable gas or vapour, These inflammable substances may form "an explosive gas mixture" to a blend of air. A serious explosive may occur if the mixture is in an explosive ambience, co-existing with tinder.

TECO YB3 belongs to "Exd" flameproof motor, its enclosure will be able to withstand an explosion of inflammable gas or vapour, which penetrates into the internal part of it through any joints of structural openings, furthermore, this explosion will not cause ignition in the external explosive gas atmosphere formed by one or more types of gas or vapour.

2. Explosive potential areas

Zone	Zone definition	Applicable motors Protection
1	Explosive zone	No applicable motors for the time being
2	Incidental explosive zone	Flameproof "d"
3	Accidental explosive zone	Increased safety "e", non-sparking "nA" motors

3. The meaning of flame-proof marking ex d iib t4 gb



4. Explosive gas mixture group table

In China and the IEC countries, explosive material is divided into three categories

- Class I:** Mine Methane
- Class II:** explosive gas mixture (water vapor, mist)
- Class III:** dust explosion and fiber

类别 Class	按爆炸性混合物的自然温度 (°C) 分组 Temp.class				
	T1	T2	T3	T4	T6
I	可燃性气体或气 Flammable gas or vapour				
	甲烷 Methane 氨 Ammonia 醋酸 Acetic acid	丁醇 Butyl alcohol 醋酸酐 Acetic anhydride	环己烷 Cyclohexane		
IIA*	乙烷 Ethane 苯 Benzene 氯苯 Chlorobenzene 甲醇 Methanol 甲苯 Toluene 一氧化碳 Carbonmonoxide	丙烷 Propane 丙酮 Acetone 苯乙烯 Styrene	丁烷 Butane 乙醇 Ethanol 丙烯 Propene 醋酸丁酯 n-Butyl acetate 醋酸戊酯 Amyl acetate 氯乙烯 Chloroethylene 醋酸乙酯 Ethyl acetate	戊烷 Pentane 乙烷 Hexane 庚烷 Heptane 辛烷 Octane 癸烷 Decane 硫化氢 Hydrogen sulfide 汽油 Gasoline	乙醚 Ether 乙醛 Acetaldehyde
	氰化氢 Hydrogen cyanide 焦炉煤气 Coal gas 环丙烷 cyclopropane 丙炔 propyne 丙烯腈 acrylonitrile	环氧乙烷 Ethylene oxide 丁二烯 Butadiene 1,4-二氧基己烷 1,4-dioxane 乙烯 Ethylene 呋喃 furan 丙烯酸甲酯 methyl acrylate	异戊二烯 Isopentylene 二甲醚 Dimethylether 丁烯醛 Butenal 乙硫醇 Ethanethiol	乙基甲基醚 Ethyl methyl ether 二乙醚 Ethyl oxide 二丁醚 Butyl oxide 四氟乙烯 Tetrafluoroethylene	
IIC	水煤气 Water gas 氢 Hydrogen				二硫化碳 Carbon disulfide

注：

- 1、上表II类中，危险级别：IIC>IIB>IIA，设备安全性：IIC>IIB>IIA “高级别”涵盖“低级别”
- 2、东元YB3隔爆电机属于“II B”类别，包含“II A”类别中之相关气体
- 3、东元YB3不适用：“I类”矿井；“III类”粉尘纤维；“IIC”类别气体
- 4、上表“*”表示，东元YB3可适用之气体类别

1. In the above-mentioned class II, the danger degree: IIC > IIB > IIA, the safety of the apparatus: IIC > IIB > IIA, high level covers the low level;
2. TECO YB3 Flame-proof motor belong to the class "IIB", and contain associated gas in the class "IIA".
3. TECO YB3 don't apply to the class of "I" "III" "IIC"
4. The above-mentioned marked "*", that means TECO YB3 applies.

点燃组别分类

Specifications of Ignition group for flameproof motors

GB3836.1、IEC60079-0、EN50014	
组别 Ignition group	点燃温度°C Ignition temperature
T1*	450
T2*	300
T3*	200
T4*	135
T5	100
T6	85

注：

1. 上表组别中，危险级别T6>T5...T1，高级别涵盖低级别；
2. 东元YB3不适用：T5、T6；
3. 上表“*”表示，东元YB3可适用之组别。

1. The above-mentioned group, danger degree T6 > T5...T1, high level covers the low level;
2. TECO YB3 don't apply for T5, T6;
3. The above-mentioned marked "*", that means TECO YB3 applies.

技术数据

种类: 隔爆型三项异步电动机
设计依据: GB3836.1,GB3836.2,JB/T7565.1
额定电压: 380V 或其它电压
额定频率: 50Hz
输出功率: 0.12~315KW
工作制: 连续工作制 S1(S.F: 1.0)

机座号: 63M~355L
防护等级: IP55
冷却方式: IC411
绝缘等级: F 级绝缘
温升: 定子绕组温升: 电阻法在 S.F: 1.0 情况下不超过 80 度(2 极和 4 极, F # 315, F # 355 不超过 105 度)

安装方式: IMB3(水平脚座安装); IMB35(水平脚座安装带大法兰); IMB5(水平大法兰安装 F # 63~280M); IMV1(立式轴向下大法兰安装 F # 63~355L)
 ●能效等级符合 GB18613-2012 3 级能效 /IE2

适用条件

电源条件: 电压波动率 $\pm 10\%$ 以内,频率波动率 $\pm 5\%$ 以内,电压及频率综合波动率最大 10% 以内,但是频率波动率不超过 $\pm 5\%$

使用场所: 爆炸性气体 1 区, 2 区场所
环境温度: $-15\sim 40^{\circ}\text{C}$
环境湿度: 相对湿度 90% 以下(但不能凝结)
海拔高度: 海拔 1000m 以下
传动方式: 皮带轮, 联轴器。但是 2 极 45KW 及以上, 4 极 160KW 及以上只能联轴器传动
旋转方向: 可双向旋转。当电源相序与电动机出线端标志字母一致时, 面对轴伸端看为顺时针方向旋转

起动方式: 全压直接启动或 Y- Δ 启动, 3KW 及以下 (三条出线): Y; 4KW 及以上: Δ / (六条出线)

涂装: 蓝色 Munsell 7.5B 3.5/0.5
要求: 安装联轴器或皮带轮请利用轴端攻牙压入, 禁止以外力敲击轴端安装。如有特殊需要请另行洽询。

Technical data

Class: Flame-proof three phase induction motors
Design standard: GB3836.1,GB3836.2,JB/T7565.1
Rated voltage: 380V or other voltage
Rated frequency: 50HZ
Output range: 0.12~315KW
Time duty: Continuous S1(S.F: 1.0)

Frame Nos.: 63M~355L
Protection enclosure: Totally enclosed(IP55)
Cooling method: Self external fan, surface cooling(IC411)
Stator insulation: Class F insulation system
Temperature rise: Not to Exceed 80 (2 , 4P F#315L , F#355 Not To Exceed 105)By Resistance Method at S.F 1.0 Operation .

Mounting: IMB3,IMB35,IMB5 (F#63~280M),IMV1 (F#63~355L) or others for typical performance and dimensions of series motor refer to table hereunder.
 Energy efficiency rating in accordance with GB18613-2012 Level 3 /IE2

Application

Power source conditions: Voltage : $\pm 10\%$, Frequency : $\pm 5\%$, and 10% Max. of Combined Voltage and Frequency . But Frequency Variation Does Not Exceed $\pm 5\%$.

Place: Explosive gas zone 1&2
Ambient temperature: $-15\sim 40^{\circ}\text{C}$
Relative humidity: Less than 90%RH(Non-condensation)
Altitude: Less than 1000 meters
Drive method: Belt Service , However , 2 Pole 45 kW & Above , 4 Pole 160 kW & Above : For Direct Coupling Only .
Direction of rotation: Clockwise when facing the drive end side and the alphabetical sequence of the terminal letters of a phase group corresponds with the time sequence of the terminal voltages, the external fan is designed for bi-directional rotation.

Method of starting: Full voltage direct on line or Y- Δ starting 3KW and below; 4KW and upside: Δ / Article six the export line

Painting: Blue Munsell 7.5B 3.5/0.5
Requirement: Basically, the coupling and belt should be heated and pushed onto the shaft extension with slight axial force, do not hammer to prevent bearing damage. If need special requirement, further discussion will be demanded drive method: Belt, direct coupling, gear and so on.

电机特点

1. 采用国内最先进的 Exd IIBT4 设计, 可在易爆炸区域安全运行。
2. 主要结构采用高强度材料, 安全可靠。
3. 符合 GB18613-2012 3 级能效标准, 是新一代高效节能的隔爆电机。
4. IP55 防护结构, 防尘, 防水花及油沫, 铸铁框架, 结构强壮, 符合国家标准, 安全更具保障性。
5. 采用东元 F 级绝缘, 耐热度高, 抗电冲击强, 绝缘寿命长, 在恶劣环境下也能胜任。
6. 使用进口品牌之轴承, 著名钢厂之硅钢片, 性能更具保障。规范化的设计、优质的材料、先进的加工设备和完善的品质保证体系, 这些表现在效率高振动小、噪音低、安全可靠。

Character

1. Adopt domestic most advanced Exd IIBT4 design, the explosive regional security operation.
2. Main structure uses high strength materials, safe and reliable.
3. Comply with GB18613-2012 3-level energy efficiency standards, a new generation of energy-efficient flameproof motors.
4. The protection enclosure is IP55, protect dust, drip and oil, Cast iron Frame strong configuration, which is accord to international standards and safety safeguarded further.
5. The stator insulation is class F of TECO insulation system with good heatproof quality, strong resistance to electrical sparks, long insulation life and can be competent in the bad environment.
6. These ranges use bearing imported from famous brand company and the silicon steel sheet are come from famous national steel company. Standardized design, high quality material, advanced processing equipment and consummation quality guarantee system, it is embody in the high efficiency, low vibrate and reliable safety.



振动 Vibration

所有电动机转子都使用半键按照 A 级 (标准) 振动等级进行动态平衡。
电动机在空载时测得振动速度有效值不超过下表中的 A 级所列值。

Rotors are dynamically balanced to severity grade A using a half key. Table below contains the effective vibration values for unloaded motors.

振动等级 Vibration grade	机座号 Frame size (mm)	63≤H≤132	160≤H≤280	315≤H≤355
A	安装方式 Mounting	振动速度 (mm/s) Vibration velocity	振动速度 (mm/s) Vibration velocity	振动速度 (mm/s) Vibration velocity
	自由悬置 Free suspension	1.6	2.2	2.8

安装方式(IM)

基本结构形式 The basic structure	B3						B5			B35			
安装结构形式 The installation structure	B3	B6	B7	B8	V5	V6	B5	V1	V3	B35	V15	V35	
示意图 Diagram													
机座号 (中心高) Frame size	63-355	63-160						63-280	63-355	63-160	80-355	80-160	

轴承型号表 Bearing type

机座号 Frame size	轴伸端 (DE)		非轴伸端 (ODE)	
	2 极 2 pole	4 极以上 More than 4 pole	2 极 2 pole	4 极以上 More than 4 pole
H63			6201-2RZ	
H71			6202-2RZ	
H80			6204-2RZ	
H90			6205-2RZ	
H100			6206-2RZ	
H112			6208-2RZ	
H132			6208-2RZ	
H160	6209-2RZ	6309-2RZ	6209-2RZ	
H180	6211-2RZ	6311-2RZ	6211-2RZ	
H200	6212-2RZ	6312-2RZ	6212-2RZ	
H225	6312-2RZ	6313-2RZ	6312-2RZ	
H250	6313/V2	6314/V2	6313/V2	
H280	6314C3	6317C3	6314C3	
H315	6316/V2	NU319	6316/V2	6319C3
H355	6319/Z2	NU322	6319/Z2	6322/Z2

注油周期 Injection cycle

额定输出 (KW)	极数 Poles	标准情况 Standard conditions	严苛情况 Harsh conditions	极严苛情况 Extreme conditions
免加油润滑型轴承的润滑脂 Grease for permanent lubrication bearing				
0.12~22	2,4,6,8	40000 小时 (h)	20000 小时 (h)	3 个月 (Mon)
可再润滑型轴承的润滑脂 Grease for regreasable bearing				
30~75	2,4,6,8,10	180 天 (Days)	60 天 (Days)	30 天 (Days)
90~110	2,4,6,8,10	90 天 (Days)	30 天 (Days)	15 天 (Days)
132~315	2,4,6,8,10	90 天 (Days)	30 天 (Days)	15 天 (Days)

轴承注油量 Bearing oil

机座号 Frame size	极数 Pole	轴承型号 Bearing Type			
		轴伸端 DE	给油量 [g] Capacity of oil-feed	非轴伸端 ODE	给油量 [g] Capacity of oil-feed
H250	2-	6313/V2	80	6313/V2	80
	4 极以上	6314/V2	80	6313/V2	80
H280	2-	6314C3	80	6314C3	80
	4 极以上	6317C3	130	6314C3	80
H315	2-	6316/V2	110	6316/V2	110
	4 极以上	NU319	140	6319C3	140
H355	2-	6319/Z2	140	6319/Z2	140
	4 极以上	NU322	220	6322/Z2	220

注: 机座号小于H250为免注油轴承

The frame size less than H250 is free of oil bearing

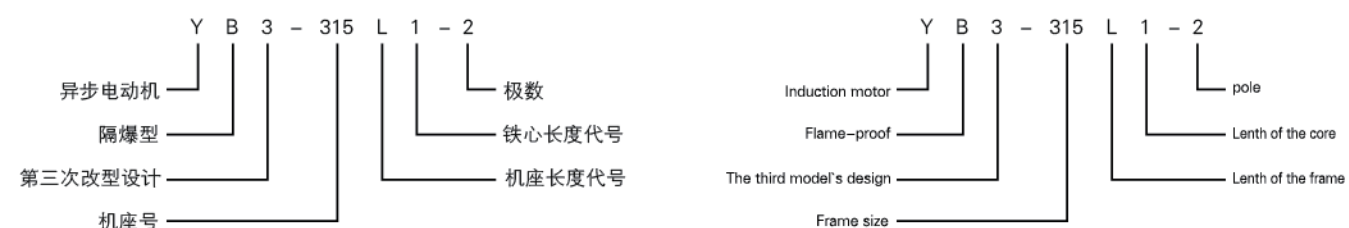
国际点燃组别比较表 International lighting group comparison

等级 Level	温度范围 Temperature	中国代码 China	欧洲代码 Europe	日本代码 Japan	美国代码 America			
1	450°C以上	T1	T1 或 G1	G1	T1 450°C			
2	300~450°C	T2	T2 或 G2	G2	T2	300°C	T2C	230°C
					T2A	280°C	T2D	215°C
					T2B	260°C		
3	200~300°C	T3	T3 或 G3	G3	T3	200°C	T3B	165°C
					T3A	180°C	T3C	160°C
4	135~200°C	T4	T4 或 G4	G4	T4	135°C	T4A	120°C
5	100~135°C	T5	T5 或 G5	G5	T5 100°C			
6	85~100°C	T6	T6 或 G6	G6	T6 85°C			

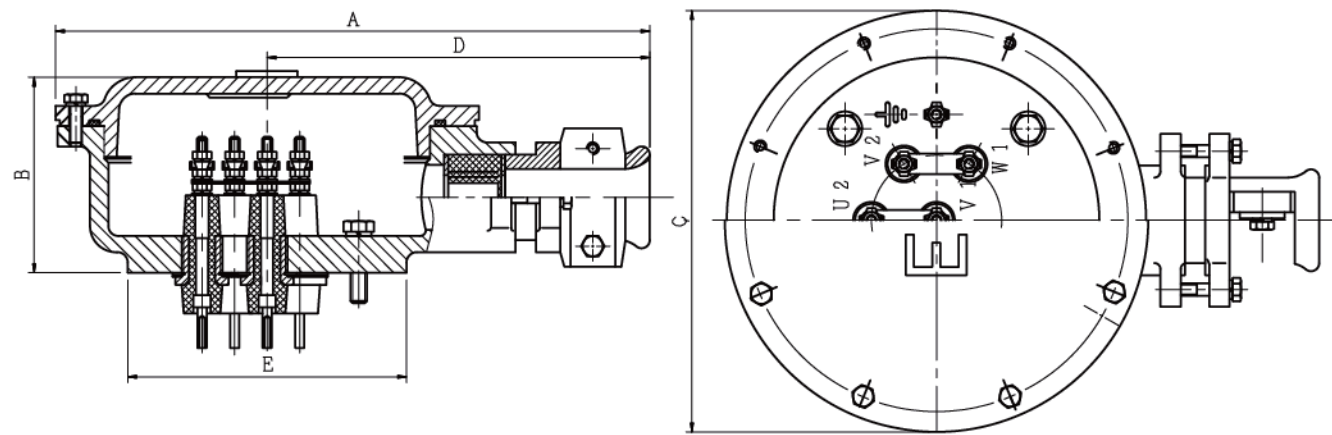
国际防爆标准比较表 The explosion-proof standards comparison

国家 Nation	标准 Std.	第一位 No.1	第二位 No.2	第三位 No.3	对等关系 Product Reference		
		构造代码 Class Structure	爆发等级代码 Group	燃点温度等级 Ignition Temp	安全增防爆 Safety Increased	耐压防爆 Explosion Proof	
中 CHN	GB	d、e、i、q、s	IIA、IIB、IIC	T1~ T6	Ex e T3	Ex de IIB T4	Ex edq IIC T6
欧 EUR	IEC(EN)	d、e、i、q、s	I IIA、IIB、IIC	T1~ T6	Ex e T3	Ex de IIB T4	Ex edq IIC T6
美 USA	NEC (NEMA)	Class I, Div. 1 Class I, Div. 2 Class II, Div.1 Class II, Div.2	Group A, B, C, D Group E, F, G	T1~ T6	Class I, Div. 2 T3	Class I, Div.1 Group C & D T4	Class I, Div.1 Group A, B, C, D T6
日 JPN	JIS	d、e、i、q、s	1、2、3	G1~ G6	eG3	d2G4	d3nG6
韩 KR	CKS		3a, 3b, 3c, 3n				

电动机型号的意义 The meaning of motor's type



接线盒资料 Terminal box data



机座号 Frame size	极数 Pole	接线盒技术参 Terminal box technical parameters			外形尺寸 Outline(mm)					
		端子数 Number of terminals	接线螺钉 螺纹 Contact screw thread	外接电缆 直径 (mm) Outer cable diameter (sealing range)	A	B	C			D
							C	C	D	
63	2P-4P	3	M5	Φ22	240	90	150	165	100	
	6P-8P-10P	3	M5	Φ22						
71	2P-4P	3	M5	Φ22	240	90	150	165	100	
	6P-8P-10P	3	M5	Φ22						
80	2P-4P	3	M5	Φ22	264	90	168	180	107	
	6P-8P-10P	3	M5	Φ22						
90	2P-4P	3	M5	Φ22	264	90	168	180	107	
	6P-8P-10P	3	M5	Φ22						
100	2P-4P	3	M5	Φ22	264	90	168	180	107	
	6P-8P-10P	3	M5	Φ22						
112	2P-4P	3 OR 6	M5	Φ22	304	102	208	200	137	
	6P-8P-10P	3 OR 6	M5	Φ22						
132	2P-4P	3 OR 6	M5	Φ22	304	102	208	200	137	
	6P-8P-10P	3 OR 6	M5	Φ22						
160	2P-4P	3 OR 6	M6	Φ28	328	113	216	220	152	
	6P-8P-10P	3 OR 6	M6	Φ28						
180	2P-4P	3 OR 6	M6	Φ28	328	113	216	220	152	
	6P-8P-10P	3 OR 6	M6	Φ28						
200	2P-4P	3 OR 6	M8	Φ37	379	120	258	250	172	
	6P-8P-10P	3 OR 6	M8	Φ37						
225	2P-4P	3 OR 6	M8	Φ37	379	120	258	250	172	
	6P-8P-10P	3 OR 6	M8	Φ37						
250	2P-4P	3 OR 6	M10	Φ40 / 2-Φ37	467	162	334	300	212	
	6P-8P-10P	3 OR 6	M10	Φ40 / 2-Φ37						
280	2P-4P	3 OR 6	M10	Φ40 / 2-Φ37	467	162	334	300	212	
	6P-8P-10P	3 OR 6	M10	Φ40 / 2-Φ37						
315	2P-4P	3 OR 6	M16	Φ58 / 2-Φ40	585	210	370	400	280	
	6P-8P-10P	3 OR 6	M16	Φ58 / 2-Φ40						
355	2P-4P	3 OR 6	M16	Φ58 / 2-Φ40	685	210	370	500	280	
	6P-8P-10P	3 OR 6	M16	Φ58 / 2-Φ40						

进线口电缆外径与密封圈选配 How to select the id of the obturating ring

进线口设有密封圈(见图1)及金属垫圈(见图2), 电缆最大外径由金属垫圈内径限制。密封圈设有多个同心圆, 使用时根据电缆外径来选择密封圈内径(见表3), 以保证接线盒斗压紧后, 使密封圈与电缆间、以及密封圈与接线盒之间无间隙, 否则不能起到防爆的作用。

There's an obturating ring in the cable entry (graph 1) and metal gasket (graph 2), the max OD of cable is limited by the ID of metal gasket. The obturating ring has more than one concentric circles, it will be necessary to select the inside diameter of the obturating ring according to the cable's outside diameter when use the motor. (graph 3) To ensure that between the obturating ring and the cable or between the obturating ring and the junction box are no gap, when the junction box is be compressed. Otherwise it can not be worked on Flame-proof.

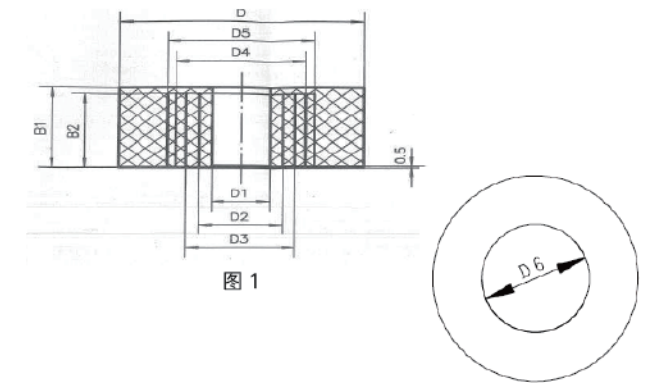
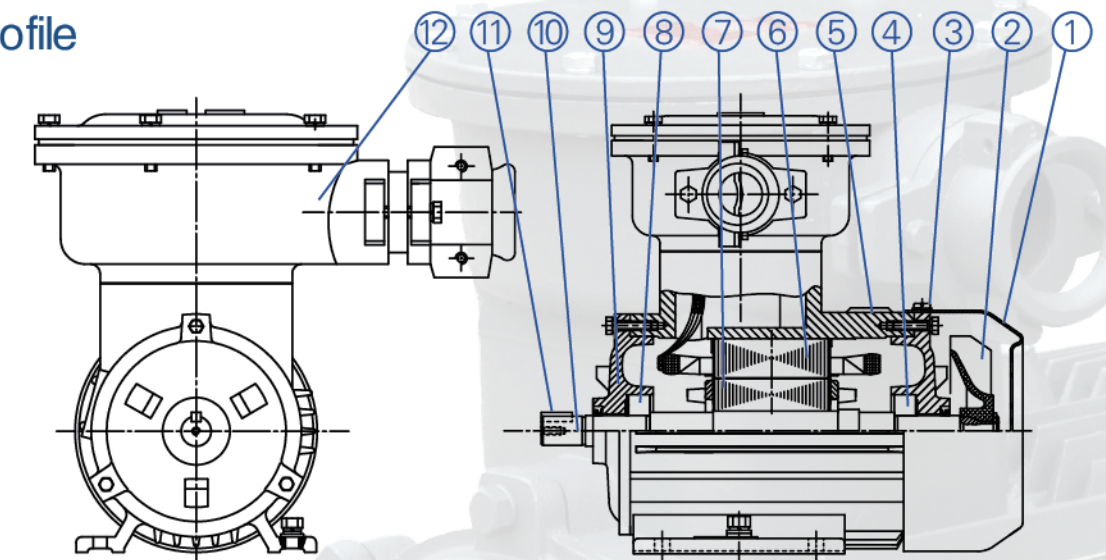


图 1

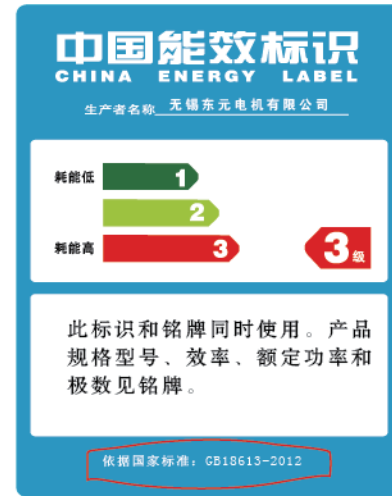
图 2

机座号 Frame size	D1	D2	D3	D4	D6
H63-132	Φ13-Φ18	Φ19-Φ22			Φ22
H160-180	Φ13-Φ18	Φ19-Φ24	Φ25-Φ28		Φ28
H200-225	Φ19-Φ24	Φ25-Φ29	Φ30-Φ35	Φ36-Φ37	Φ37
H250-280	Φ24-Φ29	Φ30-Φ33	Φ34-Φ40		Φ40(单孔)
	2-(Φ19-Φ24)	2-(Φ25-Φ29)	2-(Φ30-Φ35)	2-(Φ36-Φ37)	Φ37(双孔)
H315-355	Φ38-Φ43	Φ44-Φ47	Φ48-Φ53	Φ54-Φ58	Φ58(单孔)
	Φ-(Φ30-Φ33)	2-(Φ34-Φ40)			Φ40(双孔)

剖面图 Profile



项目 ITEM	名称 NAME	项目 ITEM	名称 NAME
1	FAN COVER(风罩)	7	ROTOR(转子)
2	EXTERNAL FAN(风扇)	8	BEARING(轴承)
3	END BRACKET(端盖)	9	END BRACKET(端盖)
4	BEARING(轴承)	10	SHAFT(轴)
5	FRAME(框架)	11	KEY(键)
6	STATOR(定子)	12	TERMINAL BOX(接线盒)

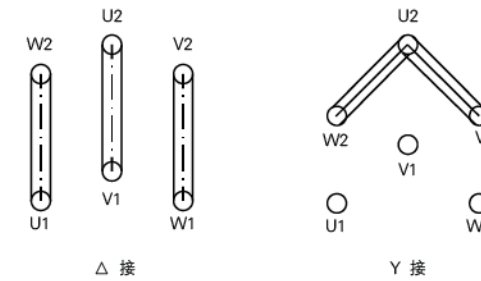


TECO 隔爆型三相异步电动机 Ex					
型号 YB3-160M-4	功率 11 kW	电压 380 V	接法 Δ	防护等级 IP55	防爆标志 Ex d IIB T4
功率因数 $\cos\phi$ 0.85	转速 1465 r/min	效率 η 89.8	额定电流 21.9 A	频率 50 Hz	执行标准 JB/T7565.1-2011
工作制 S1	产品编号 P6137186002	防爆合格证号 CNEx12.3611	2013年7月		
无锡东元电机有限公司					

TECO				
BEARING LUBRICATED AT FACTORY RE-LUBRICATE AS PER BELOW				
FRAME NO.	BEARING TYPE	VOLUME	INTERVAL	GREASE
F#250	6313~6314	80 g	2000 HOURS	ESSO POLYREX EM
F#280~315	6314~6319	140 g		
\geq F#355	6319~6322	220 g		
3W045D368				

注:
※加油依最大量标示
Please injecting with the max marks

电机接线图 Motor's wiring diagram



相序 Phase sequence	A	B	C
头top	U1	V1	W1
尾end	U2	V2	W2

接法: γ (3kw 及以下); Δ/γ (3kw 以上)
connect: γ (equal or below 3kw); Δ/γ (over 3kw)

TECO全球防爆认证
The international flame-proof certification of TECO

UL	CSA	Baseefa	CNEX	ITRI	TestSafe
美国	加拿大	欧洲	中国	台湾	澳洲



认证标识、认证号码及法规: Ex d
Certification marks, code and laws: EX d

机座号 Frame size	防爆标志 Flame-proof marking	防爆合格证 Flame-proof certificate	适用性法规 Applicable laws
H63	Ex d IIB T4 Gb	CNEx12.3604	GB3836.1-2010 GB3836.2-2010 JB/T 7565.1-2011
H71	Ex d IIB T4 Gb	CNEx12.3605	
H80	Ex d IIB T4 Gb	CNEx12.3606	
H90	Ex d IIB T4 Gb	CNEx12.3607	
H100	Ex d IIB T4 Gb	CNEx12.3608	
H112	Ex d IIB T4 Gb	CNEx12.3609	
H132	Ex d IIB T4 Gb	CNEx12.3610	
H160	Ex d IIB T4 Gb	CNEx12.3611	
H180	Ex d IIB T4 Gb	CNEx12.3612	
H200	Ex d IIB T4 Gb	CNEx12.3613	
H225	Ex d IIB T4 Gb	CNEx12.3614	

特性表 Data Sheet

隔爆型电动机(Flame-proof motor)
Model: YB3

380V 50HZ
GB 18613-2012 GB3 (IE2)

输出 OUTPUT		满载转速 rpm	机座号 FRAME NO.	效率 EFFICIENCY (%)			功率因数 POWER FACTOR (%)			电流 CURRENT (A)		转矩 TORQUE (kg-m)				转子惯量 ROTOR ₂ GD kg-m ²	噪声 NOISE SOUND POWER NO-LOAD dB(A)	重量 APPROX. WEIGHT kg
kW	hp			FULL LOAD	3/4 LOAD	1/2 LOAD	FULL LOAD	3/4 LOAD	1/2 LOAD	FULL LOAD	LOCKED ROTOR	FULL LOAD	LOCKED ROTOR	PULL UP	BREAK DOWN			
0.12	0.16	1325	63M	60.0	60.0	57.5	72.0	61.5	48.0	0.42	440	0.088	230	170	220	0.001	52	14.5
0.18	0.25	2730	63M	63.3	63.3	62.5	80.0	71.0	56.5	0.54	550	0.064	230	160	220	0.001	61	14.0
		1330	63M	64.0	64.0	62.0	73.0	62.5	49.0	0.59	440	0.132	230	170	220	0.002	52	15.0
		870	71M	59.0	59.0	56.5	66.0	56.0	43.5	0.70	400	0.201	190	150	200	0.005	52	19.0
		665	80M	51.0	51.0	48.0	61.0	51.5	40.0	0.88	330	0.263	180	130	190	0.012	52	26.5
0.25	0.33	2730	63M	66.3	66.3	66.0	81.0	72.5	58.5	0.71	550	0.089	230	160	220	0.001	61	14.5
		1340	71M	67.0	67.0	66.5	74.0	65.5	52.0	0.77	520	0.182	230	170	220	0.003	55	17.5
		870	71M	63.0	63.0	62.0	68.0	58.0	45.0	0.89	400	0.280	190	150	200	0.006	52	20.0
0.37	0.5	665	80M	54.0	54.0	51.5	61.0	51.5	39.5	1.15	330	0.366	180	130	190	0.015	52	28.5
		2770	71M	67.3	67.3	67.0	81.0	73.5	59.5	1.03	610	0.130	230	160	220	0.001	64	17.0
		1340	71M	69.5	69.5	69.0	75.0	67.0	53.0	1.08	520	0.269	230	170	220	0.003	55	18.0
		910	80M	62.0	62.0	61.0	70.0	60.5	47.0	1.30	470	0.396	190	150	200	0.010	54	25.0
0.55	0.75	690	90S	62.0	62.0	58.0	61.0	51.5	39.5	1.49	400	0.522	180	130	190	0.019	56	33.0
		2790	71M	75.5	75.5	75.0	82.0	76.0	64.5	1.35	610	0.192	230	160	230	0.002	64	18.5
		1430	80M	73.5	73.5	73.0	75.0	68.0	56.0	1.52	630	0.374	230	170	230	0.008	58	26.5
		910	80M	71.0	71.0	70.5	72.0	63.0	49.0	1.63	470	0.588	190	150	210	0.013	54	27.0
0.75	1	690	90L	63.0	63.0	59.5	61.0	51.5	39.5	2.17	400	0.776	180	130	200	0.025	56	38.5
		2865	80M	77.4	77.4	77.0	83.0	77.5	65.5	1.77	680	0.255	230	150	230	0.004	67	24.5
		1435	80M	79.6	79.6	79.5	75.0	69.0	57.5	1.91	650	0.509	230	160	230	0.011	58	29.0
		930	90S	75.9	75.9	75.5	72.0	64.0	51.0	2.09	580	0.785	210	150	210	0.021	57	34.5
1.1	1.5	690	100L	70.0	70.0	68.5	67.0	58.0	45.0	2.43	400	1.058	180	130	200	0.033	59	39.5
		2880	80M	79.6	79.6	79.5	83.0	78.5	68.5	2.53	730	0.372	230	150	230	0.006	67	27.0
		1435	90S	81.4	81.4	81.0	75.0	70.0	59.0	2.74	660	0.746	230	160	230	0.016	61	36.0
		930	90L	78.1	78.1	78.0	73.0	65.5	52.5	2.93	590	1.151	210	130	210	0.031	57	41.5
1.5	2	690	100L	72.0	72.0	67.0	69.0	59.5	46.0	3.36	500	1.551	180	120	200	0.043	59	43.5
		2900	90S	81.3	81.3	81.0	84.0	80.5	71.5	3.34	760	0.503	230	150	230	0.009	72	33.0
		1435	90L	82.8	82.8	82.5	75.0	70.0	59.5	3.67	690	1.017	230	160	230	0.021	61	42.0
		950	100L	79.8	79.8	79.5	74.0	68.0	56.0	3.86	600	1.536	210	130	210	0.053	61	47.5
2.2	3	695	112M	74.0	74.0	73.0	70.0	60.5	46.5	4.40	500	2.100	180	120	200	0.062	61	58.5
		2900	90L	83.2	83.2	83.0	85.0	82.0	74.5	4.73	780	0.738	230	140	230	0.012	72	38.0
		1450	100L	84.3	84.3	84.0	81.0	76.0	65.0	4.90	750	1.476	230	150	230	0.041	64	50.5
		955	112M	81.8	81.8	81.5	74.0	68.0	56.0	5.52	600	2.241	210	130	210	0.080	65	60.5
		705	132S	79.0	79.0	78.5	71.0	63.0	50.0	5.96	600	3.036	180	120	200	0.128	64	73.5

特性表 Data Sheet

隔爆型电动机(Flame-proof motor)
Model: YB3

380V 50HZ
GB 18613-2012 GB3 (IE2)

输出 OUTPUT		满载转速 rpm	机座号 FRAME NO.	效率 EFFICIENCY (%)			功率因数 POWER FACTOR (%)			电流 CURRENT (A)		转矩 TORQUE (kg-m)				转子惯量 ROTOR ₂ GD kg-m ²	噪声 NOISE SOUND POWER NO-LOAD dB(A)	重量 APPROX. WEIGHT kg
kW	hp			FULL LOAD	3/4 LOAD	1/2 LOAD	FULL LOAD	3/4 LOAD	1/2 LOAD	FULL LOAD	LOCKED ROTOR	FULL LOAD	LOCKED ROTOR	PULL UP	BREAK DOWN			
3	4	2900	100L	84.6	84.6	84.5	87.0	84.0	76.5	6.19	810	1.007	230	140	230	0.018	76	46.0
		1450	100L	85.5	85.5	85.0	82.0	77.5	67.0	6.50	760	2.013	230	150	230	0.052	64	56.0
		965	132S	83.3	83.3	83.0	74.0	68.5	57.0	7.39	620	3.025	200	130	210	0.150	69	80.0
		710	132M	80.0	80.0	79.5	73.0	64.5	50.5	7.80	600	4.111	180	120	200	0.178	64	87.5
4	5.5	2905	112M	85.8	85.8	85.5	88.0	85.5	78.5	8.05	830	1.340	230	140	230	0.029	77	61.5
		1460	112M	86.6	86.6	86.0	82.0	76.0	64.0	8.56	770	2.666	230	150	230	0.077	65	72.0
		965	132M	84.6	84.6	84.0	74.0	68.5	57.0	9.71	680	4.033	200	130	210	0.199	69	94.0
5.5	7.5	715	160M	81.0	81.0	80.5	73.0	65.5	52.5	10.3	600	5.443	190	120	200	0.265	68	110
		2915	132S	87.0	87.0	86.5	88.0	85.5	78.5	10.9	800	1.836	220	120	230	0.054	80	81.0
		1460	132S	87.7	87.7	87.5	82.0	78.0	68.5	11.6	750	3.665	200	140	230	0.141	71	90.0
7.5	10	965	132M	86.0	86.0	85.5	75.0	70.0	59.5	13.0	710	5.546	200	130	210	0.263	69	105
		715	160M	83.0	83.0	82.5	74.0	67.0	54.0	13.6	600	7.485	190	120	200	0.374	68	125
		2915	132S	88.1	88.1	88.0	89.0	87.0	81.0	14.5	780	2.503	220	120	230	0.067	80	88.5
11	15	1460	132M	88.7	88.7	88.5	83.0	80.0	72.5	15.5	740	4.998	200	140	230	0.186	71	110
		975	160M	87.2	87.2	87.0	78.0	72.5	61.0	16.8	670	7.485	210	130	210	0.483	73	145
		715	160L	85.5	85.5	85.0	75.0	68.0	55.0	17.8	600	10.21	190	120	200	0.530	68	150
15	20	2940	160M	89.4	89.4	89.0	89.0	87.5	82.5	21.0	790	3.640	220	120	230	0.197	86	140
		1465	160M	89.8	89.8	89.5	85.0	81.0	71.5	21.9	750	7.306	220	140	230	0.393	75	150
		975	160L	88.7	88.7	88.5	79.0	74.0	63.0	23.9	690	10.98	210	120	210	0.639	73	170
18.5	25	725	180L	87.5	87.5	87.0	75.0	69.0	56.5	25.5	650	14.76	200	110	200	0.890	70	195
		2940	160M	90.3	90.3	90.0	89.0	87.5	83.0	28.4	800	4.964	220	120	230	0.248	86	155
		1465	160L	90.6	90.6	90.5	86.0	82.5	73.5	29.2	750	9.962	220	140	230	0.504	75	170
		980	180L	89.7	89.7	89.5	81.0	77.5	69.5	31.4	720	14.89	200	120	210	1.073	73	225
22	30	730	200L	88.0	88.0	87.5	76.0	69.5	57.5	34.1	660	19.99	200	110	200	1.497	73	255
		2940	160L	90.9	90.9	90.5	89.0	87.5	83.5	34.7	810	6.123	220	110	230	0.291	86	170
		1475	180M	91.2	91.2	91.0	86.0	83.0	75.5	35.8	770	12.20	220	120	230	0.715	76	215
30	40	980	200L	90.4	90.4	90.0	81.0	76.5	66.5	38.4	720	18.37	210	120	210	1.580	76	270
		730	225S	90.0	90.0	89.5	76.0	70.5	59.0	41.1	660	24.66	190	110	200	2.316	73	315
		2950	180M	91.3	91.3	91.0	89.0	87.5	83.0	41.1	820	7.256	220	110	230	0.453	88	225
		1475	180L	91.6	91.6	91.5	86.0	83.0	76.0	42.4	780	14.51	220	120	230	0.858	76	245
		980	200L	90.9	90.9	90.5	82.0	78.5	69.5	44.8	730	21.84	210	120	210	1.872	76	295
		730	225M	90.5	90.5	90.0	78.0	72.5	61.0	47.4	660	29.32	190	110	200	2.725	73	345
		2960	200L	92.0	92.0	91.5	89.0	87.0	81.5	55.7	750	9.861	220	110	230	0.680	90	275
		1475	200L	92.3	92.3	92.0	86.0	83.0	75.0	57.4	720	19.79	220	120	230	1.339	79	305
		985	225M	91.7	91.7	91.5	81.0	78.5	70.5	61.4	710	29.63	200	120	210	2.588	76	345
		735	250M	91.0	91.0	90.5	79.0	74.0	63.0	63.4	650	39.71	190	110	200	4.135	75	445

特性表 Data Sheet

隔爆型电动机(Flame-proof motor)
Model: YB3

380V 50HZ
GB 18613-2012 GB3 (IE2)

输出 OUTPUT		满载转速 rpm	机座号 FRAME NO.	效率 EFFICIENCY			功率因数 POWER FACTOR			电流 CURRENT		转矩 TORQUE				转子惯量 ROTOR ₂ GD kg-m ²	噪声 NOISE SOUND POWER NO-LOAD dB(A)	重量 APPROX. WEIGHT kg
kW	hp			FULL LOAD (%)	3/4 LOAD (%)	1/2 LOAD (%)	FULL LOAD (%)	3/4 LOAD (%)	1/2 LOAD (%)	FULL LOAD (A)	LOCKED ROTOR %FLC	FULL LOAD kg-m	LOCKED ROTOR %FLT	PULL UP %FLT	BREAK DOWN %FLT			
37	50	2960	200L	92.5	92.5	92.0	89.0	87.0	82.0	68.3	750	12.16	220	110	230	0.802	90	300
		1480	225S	92.7	92.7	92.5	86.0	84.0	77.5	70.5	730	24.33	220	120	230	2.282	81	365
		985	250M	92.2	92.2	92.0	84.0	80.5	71.5	72.6	710	36.55	210	120	210	4.135	78	450
		740	280S	91.5	91.5	91.0	79.0	75.0	63.5	77.8	660	48.72	190	110	200	7.000	76	575
45	60	2965	225M	92.9	92.9	92.5	89.0	87.5	83.0	82.7	760	14.77	220	100	230	1.088	92	350
		1480	225M	93.1	93.1	93.0	86.0	84.0	78.0	85.4	740	29.58	220	110	230	2.601	81	390
		985	280S	92.7	92.6	92.0	86.0	83.5	77.5	85.8	720	44.52	210	110	200	7.000	80	590
		740	280M	92.0	92.0	91.5	79.0	75.0	64.5	94.1	660	59.26	190	100	200	8.000	76	635
		588	315S	91.5	91.5	91.0	75.0	70.5	59.0	99.6	620	74.58	150	80	200	16.00	82	855
55	75	2970	250M	93.2	93.2	92.5	89.0	87.0	81.5	101	760	18.02	220	100	230	1.581	93	455
		1480	250M	93.5	93.5	93.0	86.0	83.0	75.5	104	740	36.16	220	110	230	3.226	83	490
		985	280M	93.1	93.0	92.5	86.0	83.5	76.0	104	720	54.41	210	110	200	8.400	80	675
		740	315S	92.8	92.7	92.1	81.0	76.0	65.0	111	660	72.43	180	100	200	16.20	82	855
		588	315M	92.0	92.0	91.5	75.0	71.0	62.5	121	620	91.15	150	80	200	19.60	82	1,005
75	100	2970	280S	93.8	93.7	93.2	89.0	87.0	82.0	137	690	24.61	200	90	230	2.800	94	605
		1485	280S	94.0	94.0	93.5	88.0	83.5	76.0	138	670	49.22	220	100	230	6.400	86	675
		985	315S	93.7	93.6	93.1	85.0	82.0	73.0	143	670	74.20	200	100	200	16.00	85	945
		740	315M	93.5	93.5	93.0	81.0	75.5	65.0	150	620	98.77	180	90	200	21.20	82	1,055
		590	315L	92.5	92.5	92.0	76.0	71.5	62.5	162	580	123.9	150	80	200	24.80	82	1,165
90	125	2970	280M	94.1	94.0	93.5	89.0	87.5	83.0	163	700	29.53	200	90	230	3.200	94	675
		1485	280M	94.2	94.2	93.6	88.0	84.0	76.5	165	690	59.06	220	100	230	8.000	86	775
		985	315M	94.0	94.0	93.4	84.0	82.0	75.5	173	670	89.04	200	100	200	17.60	85	1,045
		740	315L	93.8	93.7	93.0	82.0	76.0	64.5	178	640	118.5	180	90	200	25.80	82	1,160
		590	315L	93.0	93.0	92.0	77.0	72.0	62.5	191	590	148.7	150	80	200	30.00	82	1,285
		590	(355S)	93.0	93.0	92.0	77.0	71.5	60.0	191	590	148.7	150	80	200	37.20	82	1,485
110	150	2970	315S	94.3	94.3	93.8	90.0	89.0	85.0	197	710	36.09	200	90	220	6.200	96	935
		1485	315S	94.5	94.5	94.5	88.0	87.0	80.0	201	690	72.18	220	100	220	12.80	93	1,015

特性表 Data Sheet

隔爆型电动机(Flame-proof motor)
Model: YB3

380V 50HZ
GB 18613-2012 GB3 (IE2)

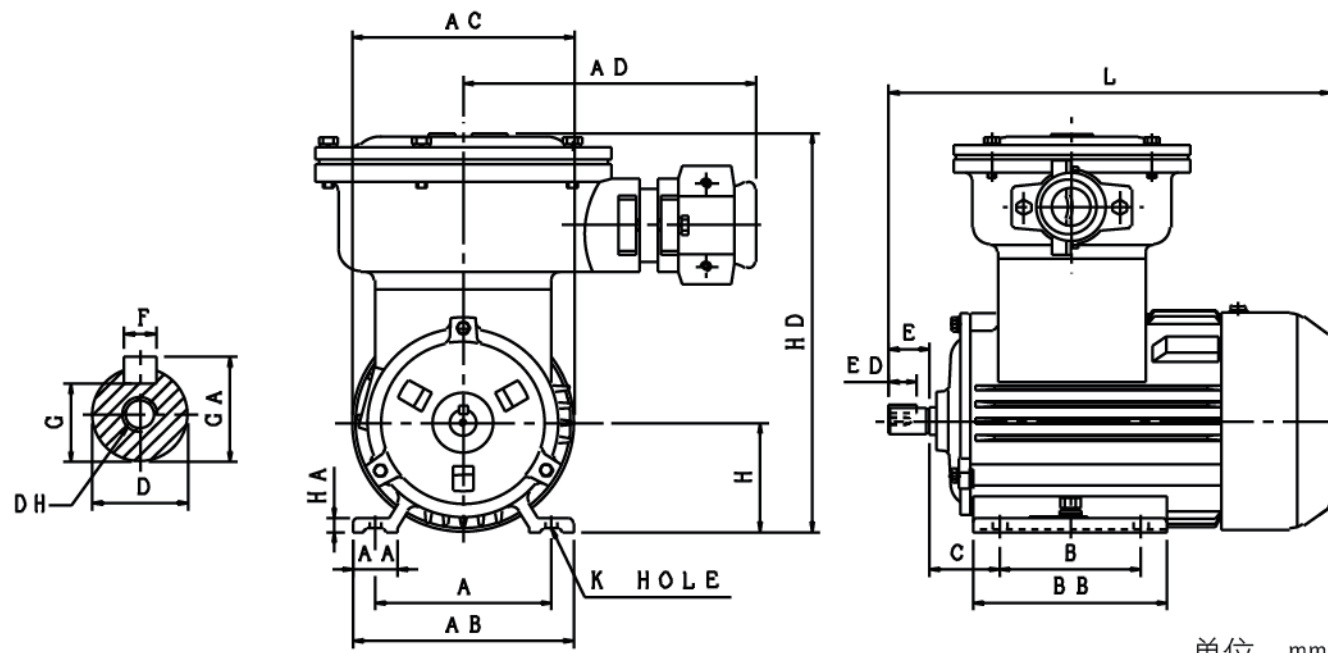
输出 OUTPUT		满载转速 rpm	机座号 FRAME NO.	效率 EFFICIENCY			功率因数 POWER FACTOR			电流 CURRENT		转矩 TORQUE				转子惯量 ROTOR ₂ GD kg-m ²	噪声 NOISE SOUND POWER NO-LOAD dB(A)	重量 APPROX. WEIGHT kg
kW	hp			FULL LOAD (%)	3/4 LOAD (%)	1/2 LOAD (%)	FULL LOAD (%)	3/4 LOAD (%)	1/2 LOAD (%)	FULL LOAD (A)	LOCKED ROTOR %FLC	FULL LOAD kg-m	LOCKED ROTOR %FLT	PULL UP %FLT	BREAK DOWN %FLT			
160	215	2970	315L	94.8	94.8	94.0	91.0	89.5	86.5	282	710	52.50	200	90	220	8.000	98	1,135
		1485	315L	94.9	94.9	94.1	89.0	87.5	81.0	288	690	105.0	220	100	220	17.00	94	1,235
		988	355S	94.8	94.8	94.0	87.0	84.0	76.0	295	670	157.8	200	100	200	37.80	92	1,670
		740	355M	94.2	94.2	93.6	82.0	76.5	65.0	315	640	210.7	180	90	200	57.60	90	1,985
		585	355L	93.5	93.5	92.8	78.0	72.5	63.0	333	600	266.5	130	80	200	71.80	90	2,175
		2975	(355S)	94.9	94.8	94.0	91.0	89.0	85.0	325	710	60.60	200	90	220	9.600	98	1,475
185	250	1485	(355S)	95.0	94.9	94.1	89.0	86.5	78.5	332	690	121.4	220	100	220	24.80	94	1,545
		988	(355M)	94.9	94.8	94.0	87.0	84.0	77.0	340	670	182.5	200	100	200	40.40	92	1,855
		740	(355L)	94.2	94.2	93.6	82.0	76.5	65.0	364	640	243.6	180	90	200	65.00	90	2,080
		585	(355L)	93.5	93.5	92.8	78.0	72.5	61.0	385	600	308.2	130	80	200	80.00	90	2,395
200	270	2975	315L	95.0	94.9	94.0	91.0	89.0	84.5	352	710	65.51	200	80	220	8.80	98	1,205
		2975	(355S)	95.0	94.9	94.6	91.0	88.5	83.5	352	710	65.51	200	80	220	10.80	98	1,370
		1485	315L	95.1	95.0	94.5	89.0	87.0	82.5	359	690	131.2	220	90	220	20.00	94	1,585
		1485	(355S)	95.1	95.0	94.5	89.0	86.0	79.0	359	690	131.2	220	90	220	26.40	94	1,615
		985	355M	95.0	95.0	94.1	87.0	84.0	76.0	368	670	197.9	200	90	200	46.80	92	1,990
		742	355L	94.5	94.5	93.8	83.0	77.0	65.0	387	640	262.7	180	90	200	75.20	90	2,240
220	300	2975	(355M)	95.0	94.6	94.0	91.0	89.5	85.0	387	710	72.06	200	80	220	11.20	98	1,700
		1485	(355M)	95.1	95.0	94.5	89.0	86.0	79.0	395	690	144.4	220	90	220	29.60	94	1,790
		988	(355L)	95.0	95.0	94.3	87.0	84.0	75.5	404	670	217.0	200	90	200	50.00	92	2,020
250	335	2975	355M	95.0	94.8	94.0	91.0	89.0	86.0	439	710	81.89	200	80	220	13.20	100	1,840
		1488	355M	95.1	95.0	94.6	90.0	87.5	81.0	444	690	163.7	220	90	220	32.40	95	1,900
		988	355L	95.0	95.0	94.2	87.0	85.5	78.0	460	670	246.6	200	90	200	58.80	92	2,250
280	375	2975	355L	95.0	94.8	94.0	91.0	89.0	87.5	492	710	91.72	200	80	220	13.60	100	1,935
		1488	355L	95.1	95.0	94.6	90.0	87.5	81.0	497	690	163.7	220	90	220	36.00	95	2,100
315	420	2975	355L	95.0	94.8	94.2	91.0	91.0	89.0	554	710	103.2	200	80	220	16.20	100	2,145
		1488	355L	95.1	95.1	94.3	90.0	88.0	81.5	559	690	206.3	220	80	220	42.40	95	2,130

注: 1. 0.55KW以下, 8P、10P不在GB3/IE2能效等级范围内

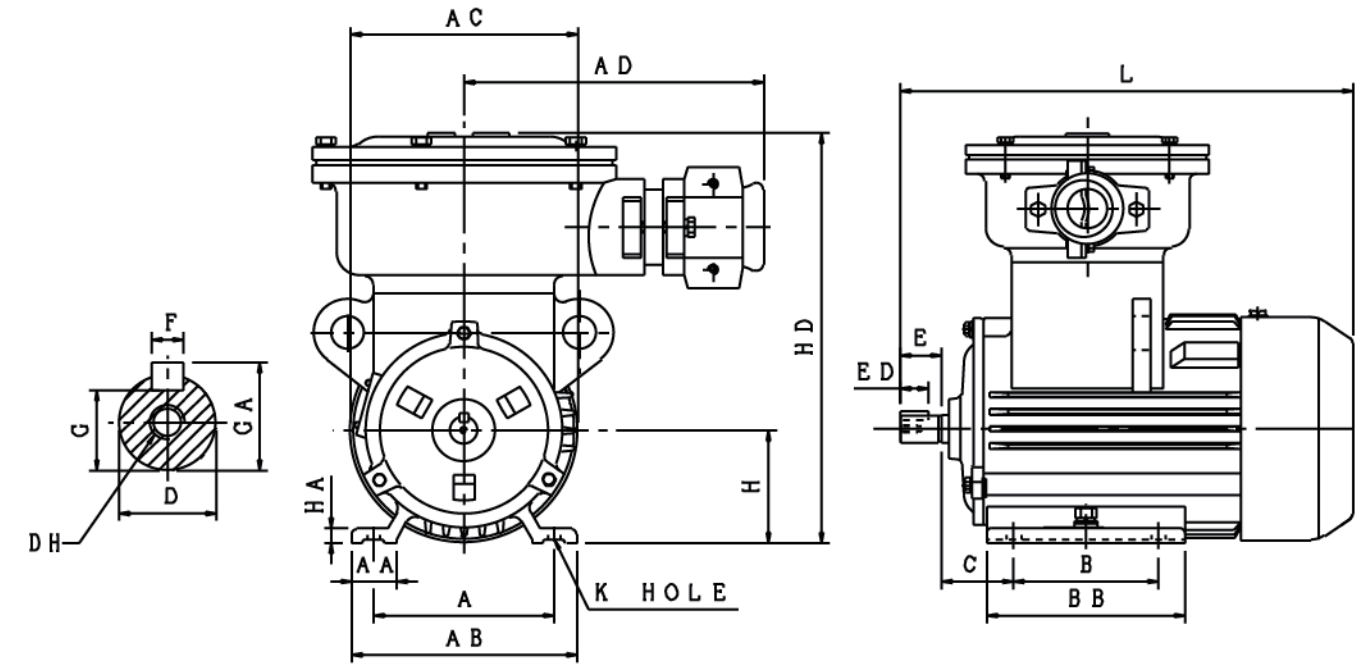
外形图 Outline

外形及安装尺寸图

安装方式: IMB3 (IM 1001)



单位: mm



单位: mm

输出 Output (kW)				机座号 FRAME SIZE	A	AA	AB	AC	AD	B	BB	C	H	HA	HD	K	L
2P	4P	6P	8P														
0.18	0.12	—	—	63M	100	25	130	150	165	80	110	40	63	8	230	7	241
0.25	0.18																
0.37	0.25	0.18	—	71M	112	28	140	155	165	90	114	45	71	8	250	7	272
0.55	0.37	0.25															
0.75	0.55	0.37	0.18	80M	125	34	165	165	180	100	130	50	80	10	320	10	320
1.1	0.75	0.55	0.25														

机座号 FRAME SIZE	轴端 SHAFT EXTENSION							轴承 BEARING		The max. OUTER DIAMETER of INLET CABLE
	D	E	ED	F	G	GA	DH	驱动端 DE	非驱动端 ODE	
63M	11	23	16	4	8.5	12.5	M4X10	6201-2RZ	6201-2RZ	Ø22
71M	14	30	22.5	5	11	16	M5X12.5	6202-2RZ	6202-2RZ	Ø22
80M	19	40	25	6	15.5	21.5	M6X16	6204-2RZ	6204-2RZ	Ø22

注: 安装联轴器或皮带轮请利用轴端攻牙压进迫入, 禁止以外力敲打轴端安装
轴径 D 公差: F#63~80M J6

Note: install the coupling and pulley please use tapping into a forced into the shaft end, tapping shaft end installed by external force is prohibited
Tolerance of shaft end Diameter D: F#63~80M J6

输出 Output (kW)				机座号 FRAME SIZE	A	AA	AB	AC	AD	B	BB	C	H	HA	HD	K	L
2P	4P	6P	8P														
1.5	1.1	0.75	0.37	90S	140	36	180	180	180	100	135	56	90	14	350	10	370
2.2	1.5	1.1	0.55	90L						125	160						395
3	2.2	1.5	0.75	100L	160	43	200	205	200	140	180	63	100	16	400	12	448
4	4	2.2	1.5	112M													70
5.5	5.5	3	2.2	132S	216	68	280	270	200	140	190	89	132	18	450	12	550
7.5	7.5	3	2.2	132M						178	230						600
—	7.5	4	3														

机座号 FRAME SIZE	轴端 SHAFT EXTENSION							轴承 BEARING		The max. OUTER DIAMETER of INLET CABLE
	D	E	ED	F	G	GA	DH	驱动端 DE	非驱动端 ODE	
90S	24	50	36	8	20	27	M8X19	6205-2RZ	6205-2RZ	Ø22
90L										
100L	28	60	44	10	24	31	M10X22	6206-2RZ	6206-2RZ	Ø22
112M										
132S	38	80	61	10	33	41	M12X28	6208-2RZ	6208-2RZ	Ø22
132M										

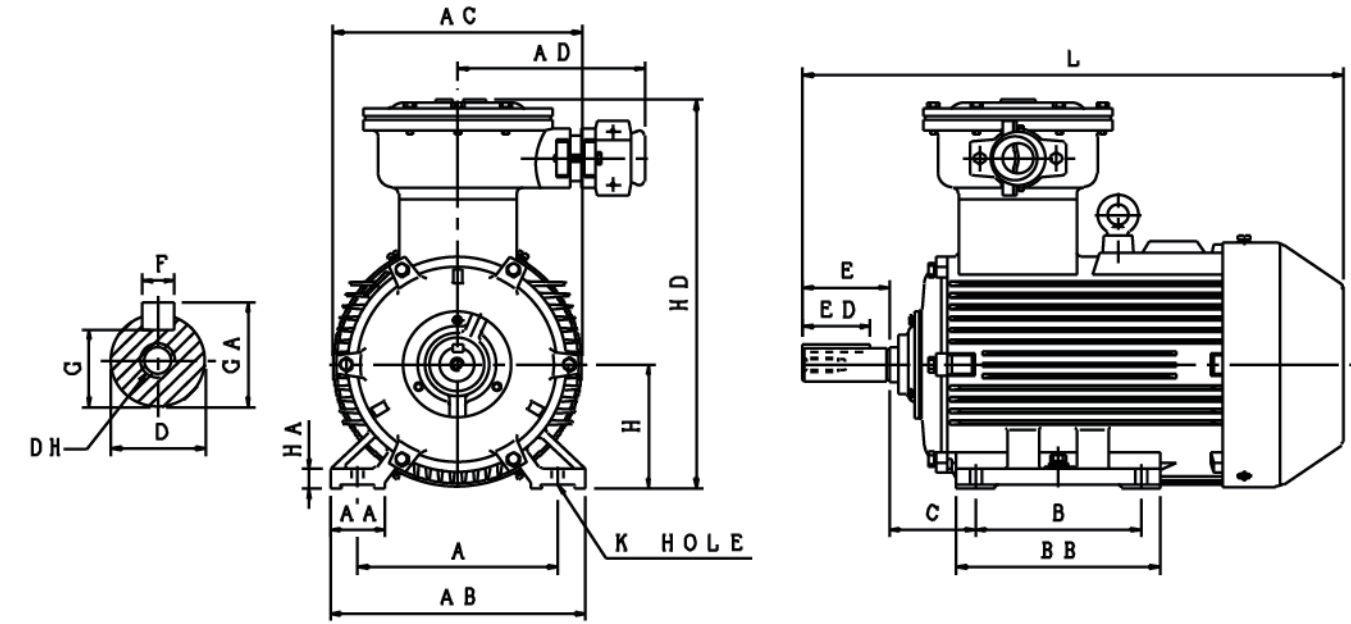
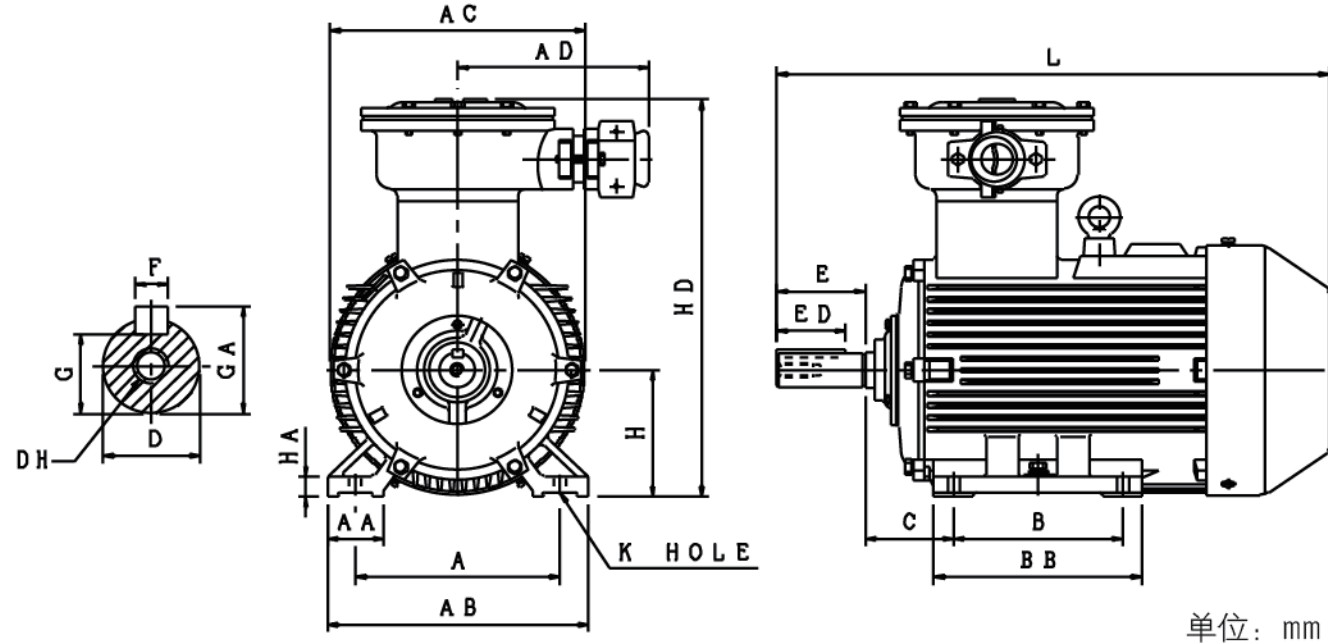
注: 安装联轴器或皮带轮请利用轴端攻牙压进迫入, 禁止以外力敲打轴端安装
轴径 D 公差: F#90S~112M J6 F#132S~132M K6

Note: install the coupling and pulley please use tapping into a forced into the shaft end, tapping shaft end installed by external force is prohibited
Tolerance of shaft end Diameter D: F#90S~112M J6 F#132S~132M K6

外形图 Outline

外形及安装尺寸图

安装方式: IMB3 (IM 1001)



单位: mm

输出 Output (kW)				机座号 FRAME SIZE	A	AA	AB	AC	AD	B	BB	C	H	HA	HD	K	L
2P	4P	6P	8P														
11	11	7.5	4	160M	254	70	330	325	220	210	260	108	160	20	520	14.5	720
15	15	11	5.5							254	310						
18.5	15	11	7.5	160L	279	70	355	360	220	241	340	121	180	22	550	14.5	771
—	22	15	11	180L	318	70	390	400	250	279	349	133	200	25	645	18.5	791
30	30	18.5	15	200L	318	70	390	400	250	305	370	133	200	25	645	18.5	840

机座号 FRAME SIZE	轴端 SHAFT EXTENSION							轴承 BEARING		The max. OUTER DIAMETER of INLET CABLE
	D	E	ED	F	G	GA	DH	驱动端 DE	非驱动端 ODE	
160M	42	110	86	12	37	45	M16X36	(6209-2RZ)	(6209-2RZ)	Ø28
160L								6309-2RZ	6209-2RZ	
180M	48	110	87	14	42.5	51.5	M16X36	(6211-2RZ)	(6211-2RZ)	Ø28
180L								6311-2RZ	6211-2RZ	
200L	55	110	93	16	49	59	M20X42	(6212-2RZ)	(6212-2RZ)	Ø37

注: 安装联轴器或皮带轮请利用轴端攻牙压进迫入, 禁止以外力敲打轴端安装
 轴径 D 公差: F#160M~180L K6 F#200L M6
 轴承 () 内为 2P 转速

Note: install the coupling and pulley please use tapping into a forced into the shaft end, tapping shaft end installed by external force is prohibited
 Tolerance of shaft end Diameter D: F#160M~180L K6 F#200L M6
 Bearing No. in () is for 2p

输出 Output (kW)					机座号 FRAME SIZE	A	AA	AB	AC	AD	B	BB	C	H	HA	HD	K	L
2P	4P	6P	8P	10P														
—	37	—	18.5	—	225S	356	75	435	450	250	286	355	149	225	28	690	18.5	888
45	45	30	22	—	225M						311	380						888
55	55	37	30	—	250M	406	80	490	500	300	349	420	168	250	30	730	24	965
75	75	45	37	—	280S						368	445						1010
90	90	55	45	—	280M	457	85	545	560	300	419	500	190	280	35	810	28	1072
110	110	75	55	45	315S						406	550						1320
132	132	90	75	55	315M	508	120	640	630	400	457	680	216	315	45	1020	28	1350

机座号 FRAME SIZE	轴端 SHAFT EXTENSION							轴承 BEARING		The max. OUTER DIAMETER of INLET CABLE
	D	E	ED	F	G	GA	DH	驱动端 DE	非驱动端 ODE	
225S	60	140	109	18	53	64	M20X42	6313-2RZ	6312-2RZ	Ø37
225M	55	110	88	16	49	59	M20X42	(6312-2RZ)	(6312-2RZ)	
250M	60	140	109	18	53	64	M20X42	(6313/V2)	(6313/V2)	Ø40 / 2-Ø37
280S	65							6314/V2	6313/V2	
280M	65	140	109	18	58	69	M20X42	(6314C3)	(6314C3)	Ø40 / 2-Ø37
	75	110	20	67.5	79.5	M20X42	6317C3	6314C3		
315S	65	140	109	18	58	69	M20X42	(6316/V2)	(6316/V2)	Ø58 / 2-Ø40
315M	80	170	141	22	71	85	M20X42	NU319	6319C3	
	65	140	109	18	58	69	M20X42	(6316/V2)	(6316/V2)	
	80	170	141	22	71	85	M20X42	NU319	6319C3	

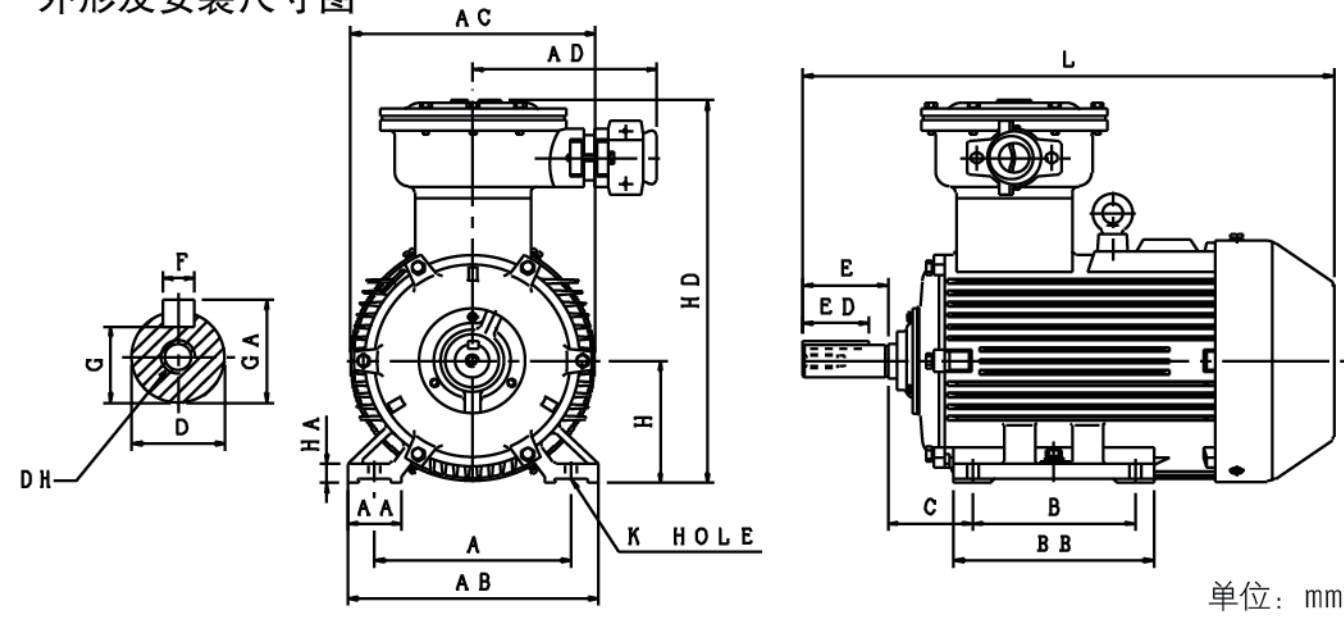
注: 安装联轴器或皮带轮请利用轴端攻牙压进迫入, 禁止以外力敲打轴端安装
 轴径 D 公差: F#225S~315M M6
 轴承 () 内为 2P 转速

Note: install the coupling and pulley please use tapping into a forced into the shaft end, tapping shaft end installed by external force is prohibited
 Tolerance of shaft end Diameter D: F#225S~315M M6
 Bearing No. in () is for 2p

外形图 Outline

外形及安装尺寸图

安装方式: IMB3 (IM 1001)



单位: mm

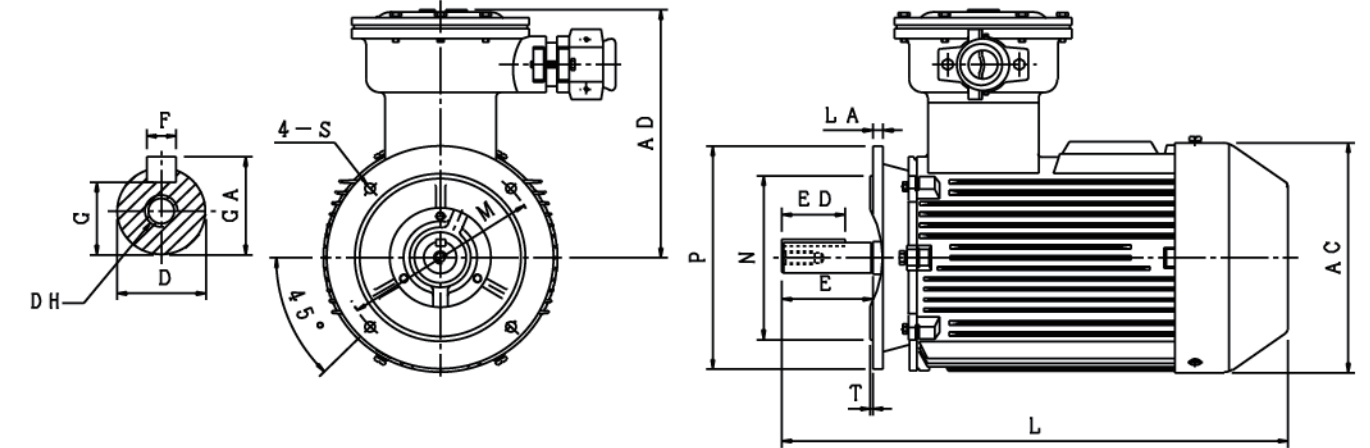
输出 Output (kW)					机座号 FRAME SIZE	A	AA	AB	AC	AD	B	BB	C	H	HA	HD	K	L
2P	4P	6P	8P	10P														
160	—	—	—	—	315L	508	120	640	630	400	508	680	216	315	45	1020	28	1490
—	160	110	90	75														1520
(185)	—	—	—	—	355S						500	636						1570
—	(185)	160	132	(90)														1650
(220)	—	—	—	—	355M	610	116	740	750	500	560	696	254	355	52	1080		1650
—	(220)	(185)	160	110														1750
(280)	—	—	—	—	355L						630	766						1750
—	(280)	(220)	(185)	160														

机座号 FRAME SIZE	轴端 SHAFT EXTENSION							轴承 BEARING		The max. OUTER DIAMETER of INLET CABLE
	D	E	ED	F	G	GA	DH	驱动端 DE	非驱动端 ODE	
315L	65	140	109	18	58	69	M20X42	6316/V2	6316/V2	Ø58 / 2-Ø40
	80	170	141	22	71	85	M20X42	NU319	6319C3	
355S	75	140	110	20	67.5	79.5	M20X42	6319/Z2	6319/Z2	Ø58 / 2-Ø40
	95	170	142.5	25	86	100	M24X50	NU322	6322/Z2	
355M	75	140	110	20	67.5	79.5	M20X42	6319/Z2	6319/Z2	Ø58 / 2-Ø40
	95	170	142.5	25	86	100	M24X50	NU322	6322/Z2	
355L	75	140	110	20	67.5	79.5	M20X42	6319/Z2	6319/Z2	Ø58 / 2-Ø40
	95	170	142.5	25	86	100	M24X50	NU322	6322/Z2	

注: 安装联轴器或皮带轮请利用轴端攻牙压进迫入, 禁止以外力敲打轴端安装
轴径 D 公差: F#315L~355L M6

Note: install the coupling and pulley please use tapping into a forced into the shaft end, tapping shaft end installed by external force is prohibited
Tolerance of shaft end Diameter D: F#315L~355L M6

安装方式: IMB5 (IM 3001) IMV1 (IM 3011)



单位: mm

输出 Output (kW)				机座号 FRAME SIZE	法兰尺寸 FLANGE DIMENSION						AC	AD	L
2P	4P	6P	8P		LA	M	N	P	S	T			
0.18	0.12	—	—	63M	10	115	95	140	10	3	150	170	241
0.25	0.18												
0.37	0.25	0.18	—	71M	12	130	110	160	12	3.5	155	272	
0.55	0.37	0.25											
0.75	0.55	0.37	0.18	80M	12	165	130	200	12	3.5	165	240	320
1.1	0.75	0.55	0.25										

机座号 FRAME SIZE	轴端 SHAFT EXTENSION							轴承 BEARING		The max. OUTER DIAMETER of INLET CABLE
	D	E	ED	F	G	GA	DH	驱动端 DE	非驱动端 ODE	
63M	11	23	16	4	8.5	12.5	M4X10	6201-2RZ	6201-2RZ	Ø22
71M	14	30	22.5	5	11	16	M5X12.5	6202-2RZ	6202-2RZ	Ø22
80M	14	30	22.5	5	11	16	M6X16	6204-2RZ	6204-2RZ	Ø22

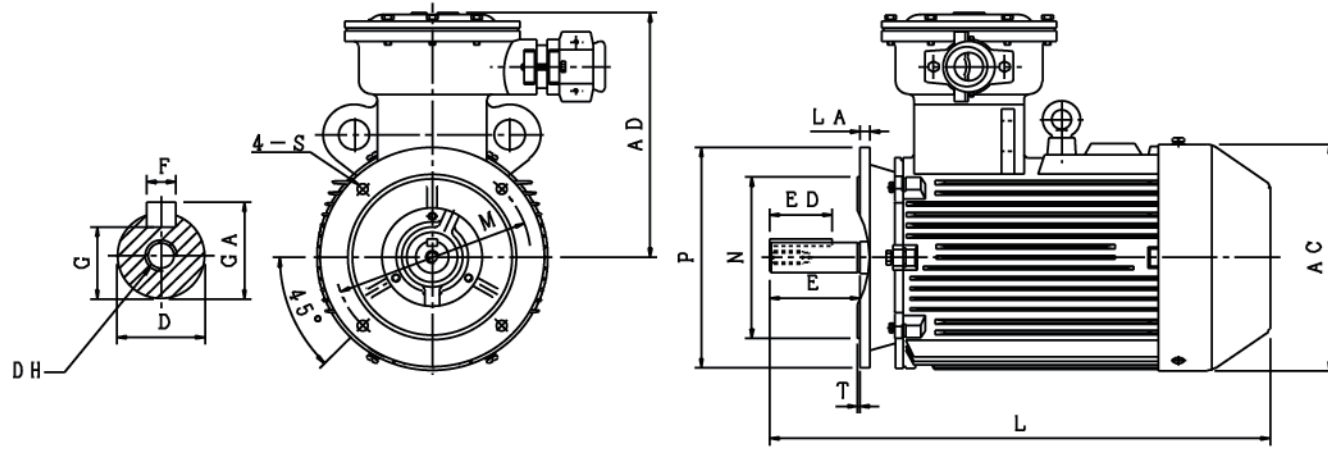
注: 安装联轴器或皮带轮请利用轴端攻牙压进迫入, 禁止以外力敲打轴端安装
轴径 D 公差: F#63M~80M J6
法兰 N 公差: J6

Note: install the coupling and pulley please use tapping into a forced into the shaft end, tapping shaft end installed by external force is prohibited
Tolerance of shaft end Diameter D: F#63M~80M J6
Tolerance of flange Diameter N: J6

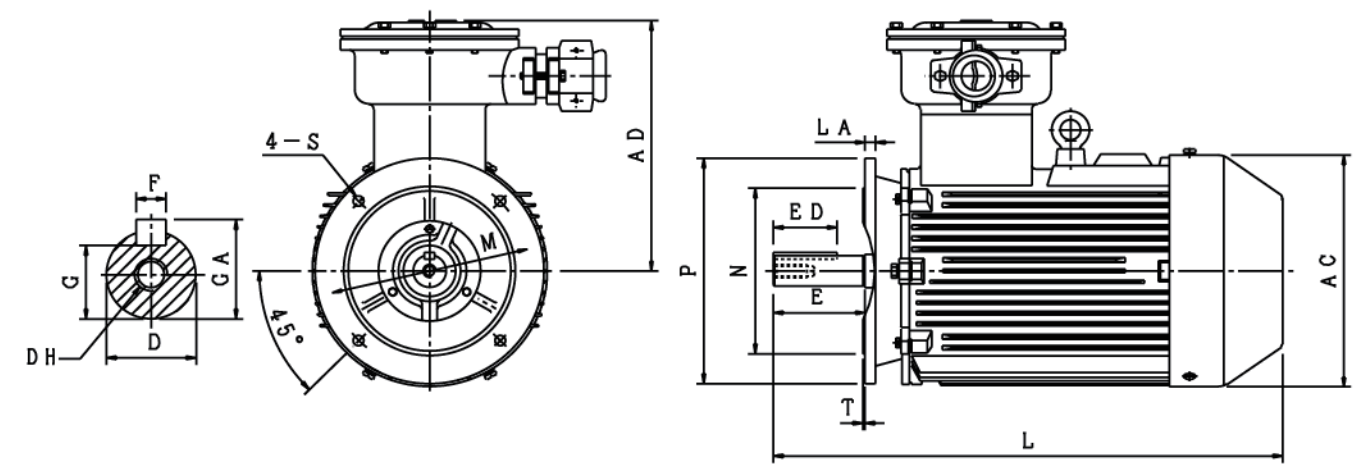
外形图 Outline

外形及安装尺寸图

安装方式: IMB5 (IM 3001) IMV1 (IM 3011)



单位: mm



单位: mm

输出 Output (kW)				机座号 FRAME SIZE	法兰尺寸 FLANGE DIMENSION						AC	AD	L
2P	4P	6P	8P		LA	M	N	P	S	T			
1.5	1.1	0.75	0.37	90S	14	165	130	200	12	3.5	180	260	370
2.2	1.5	1.1	0.55	90L									
3	2.2	1.5	0.75	100L	14	215	180	250	14.5	4	205	300	448
4	4	2.2	1.5	112M									
5.5	5.5	3	2.2	132S	14	265	230	300	14.5	4	270	320	550
7.5	7.5	4	3	132M									

机座号 FRAME SIZE	机座号 SHAFT EXTENSION							轴承 BEARING		The max. OUTER DIAMETER of INLET CABLE
	D	E	ED	F	G	GA	DH	驱动端 DE	非驱动端 ODE	
90S	24	50	36	8	20	27	M8X19	6205-2RZ	6205-2RZ	Ø22
90L										
100L	28	60	44	8	24	31	M10X22	6206-2RZ	6206-2RZ	Ø22
112M										
132S	38	80	61	10	33	41	M12X28	6208-2RZ	6208-2RZ	Ø22
132M										

注: 安装联轴器或皮带轮请利用轴端攻牙压进迫入, 禁止以外力敲打轴端安装
轴径 D 公差: F#90S~112M J6 F#132S~132M K6
法兰 N 公差: J6

Note: install the coupling and pulley please use tapping into a forced into the shaft end, tapping shaft end installed by external force is prohibited
Tolerance of shaft end Diameter D: F#90S~112M J6 F#132S~132M K6
Tolerance of flange Diameter N: J6

输出 Output (kW)				机座号 FRAME SIZE	法兰尺寸 FLANGE DIMENSION						AC	AD	L
2P	4P	6P	8P		LA	M	N	P	S	T			
11	11	7.5	4	160M	15	300	250	350	18.5	5	325	360	720
15	15	5.5	5.5										
18.5	15	11	7.5	160L	18	300	250	350	18.5	5	360	370	771
22	18.5	—	—	180M									
—	22	15	11	180L	18	350	300	400	18.5	5	400	445	840
30	30	18.5	15	200L									
37	30	22	—	200L	18	350	300	400	18.5	5	400	445	840

机座号 FRAME SIZE	轴端 SHAFT EXTENSION							轴承 BEARING		The max. OUTER DIAMETER of INLET CABLE
	D	E	ED	F	G	GA	DH	驱动端 DE	非驱动端 ODE	
160M	42	50	36	8	20	27	M16X36	6209-2RZ	6209-2RZ	Ø28
160L										
180M	48	60	44	8	24	31	M16X36	6211-2RZ	6211-2RZ	Ø28
180L										
200L	55	80	61	10	33	41	M20X42	6212-2RZ	6212-2RZ	Ø37
200L										

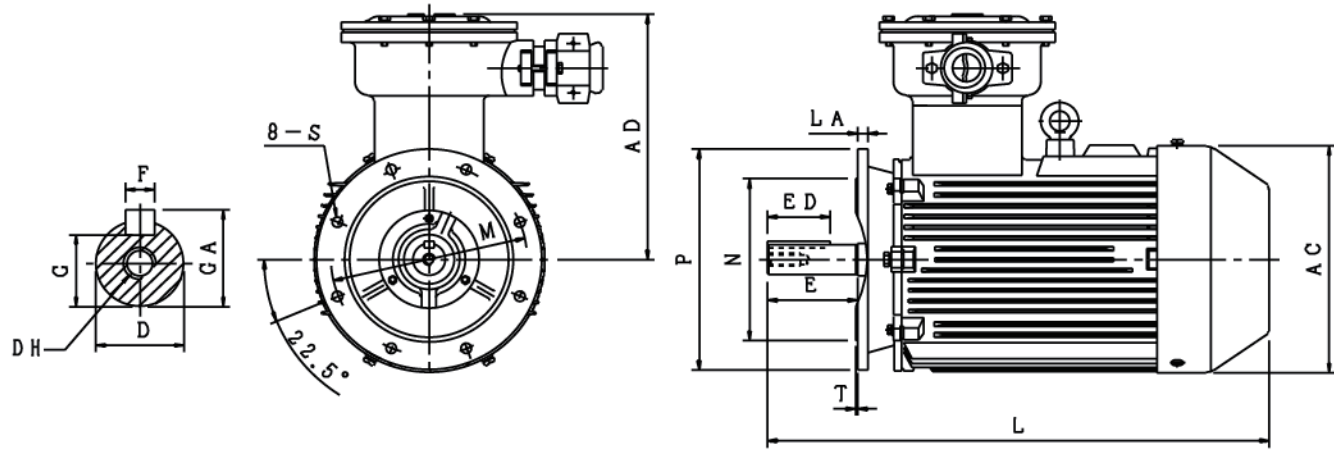
注: 安装联轴器或皮带轮请利用轴端攻牙压进迫入, 禁止以外力敲打轴端安装
轴径 D 公差: F#160M~180L K6 F#200L M6
法兰 N 公差: J6
轴承 () 内为 2P 转速

Note: install the coupling and pulley please use tapping into a forced into the shaft end, tapping shaft end installed by external force is prohibited
Tolerance of shaft end Diameter D: F#160M~180L K6 F#200L M6
Tolerance of flange Diameter N: J6
Bearing No. in () is for 2p

外形图 Outline

外形及安装尺寸图

安装方式: IMB5 (IM 3001)
IMV1 (IM 3011)



单位: mm

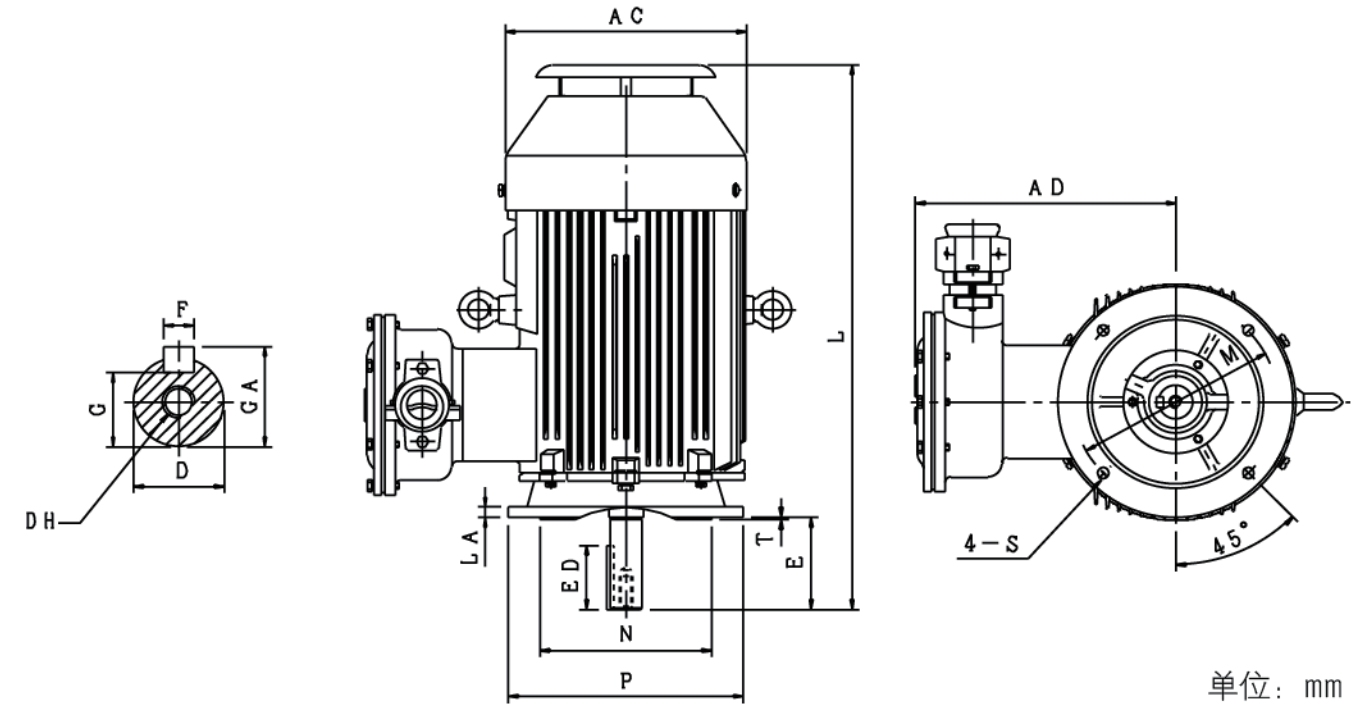
Output (kW)				FRAME SIZE	FLANGE DIMENSION						AC	AD	L		
2P	4P	6P	8P		LA	M	N	P	S	T					
—	37	—	18.5	225S	18	400	350	450	18.5	5	450	465	888		
45	45	30	22	225M									918		
55	55	37	30	250M	20	500	450	550	18.5	5	500	500	965		
75	75	45	37	280S	22								560	550	1010
90	90	55	45	280M											1072

FRAME SIZE	SHAFT EXTENSION						BEARING		The max. OUTER DIAMETER of INLET CABLE	
	D	E	ED	F	G	GA	DH	驱动端 DE		非驱动端 ODE
225S	60	140	109	18	53	64	M20X42	6313-2RZ	6312-2RZ	Ø37
225M	55	110	88	16	49	59	M20X42	(6312-2RZ) 6313-2RZ	(6312-2RZ) 6312-2RZ	
250M	60	140	109	18	53	64	M20X42	(6313/V2) 6314/V2	(6313/V2) 6313/V2	Ø40 / 2-Ø37
280S	65		109	18	58	69	M20X42	(6314C3) 6317C3	(6314C3) 6314C3	
280M	75		110	20	67.5	79.5	M20X42	(6314C3) 6317C3	(6314C3) 6314C3	
280M	65	109	18	58	69	M20X42	(6314C3) 6317C3	(6314C3) 6314C3		

注: 安装联轴器或皮带轮请利用轴端攻牙压进迫入, 禁止以外力敲打轴端安装
轴径 D 公差: F#225S~280M M6
法兰 N 公差: J6
轴承 () 内为 2P 转速

Note: install the coupling and pulley please use tapping into a forced into the shaft end, tapping shaft end installed by external force is prohibited
Tolerance of shaft end Diameter D: F#225S~280M M6
Tolerance of flange Diameter N: J6
Bearing No. in () is for 2p

安装方式: IMV1 (IM 3011)



单位: mm

输出 Output (kW)				机座号 FRAME SIZE	法兰尺寸 FLANGE DIMENSION						AC	AD	L
2P	4P	6P	8P		LA	M	N	P	S	T			
0.18	0.12	—	—	63M	10	115	95	140	10	3	150	170	281
0.25	0.18	—	—										
0.37	0.25	0.18	—	71M	12	130	110	160	12	3.5	165	240	365
0.55	0.37	0.25	—										
0.75	0.55	0.37	0.18	80M	14	165	130	200	12	4	180	260	440
1.1	0.75	0.55	0.25										
1.5	1.1	0.75	0.37	90S	14	215	180	250	14.5	4	205	300	493
2.2	1.5	1.1	0.55										
3	2.2	1.5	0.75	100L	14	215	180	250	14.5	4	205	300	493
4	3	1.5	1.1										
4	4	2.2	1.5	112M	14	215	180	250	14.5	4	230	310	560

机座号 FRAME SIZE	轴端 SHAFT EXTENSION						轴承 BEARING		The max. OUTER DIAMETER of INLET CABLE	
	D	E	ED	F	G	GA	DH	驱动端 DE		非驱动端 ODE
63M	11	23	16	4	8.5	12.5	M4X10	6201-2RZ	6201-2RZ	Ø22
71M	14	30	22.5	5	11	16	M5X12.5	6202-2RZ	6202-2RZ	Ø22
80M	19	40	25	6	15.5	21.5	M6X16	6204-2RZ	6204-2RZ	Ø22
90S	24	50	36	8	20	27	M8X19	6205-2RZ	6205-2RZ	Ø22
90L										
100L	28	60	44	8	24	31	M10X22	6206-2RZ	6206-2RZ	Ø22
112M										

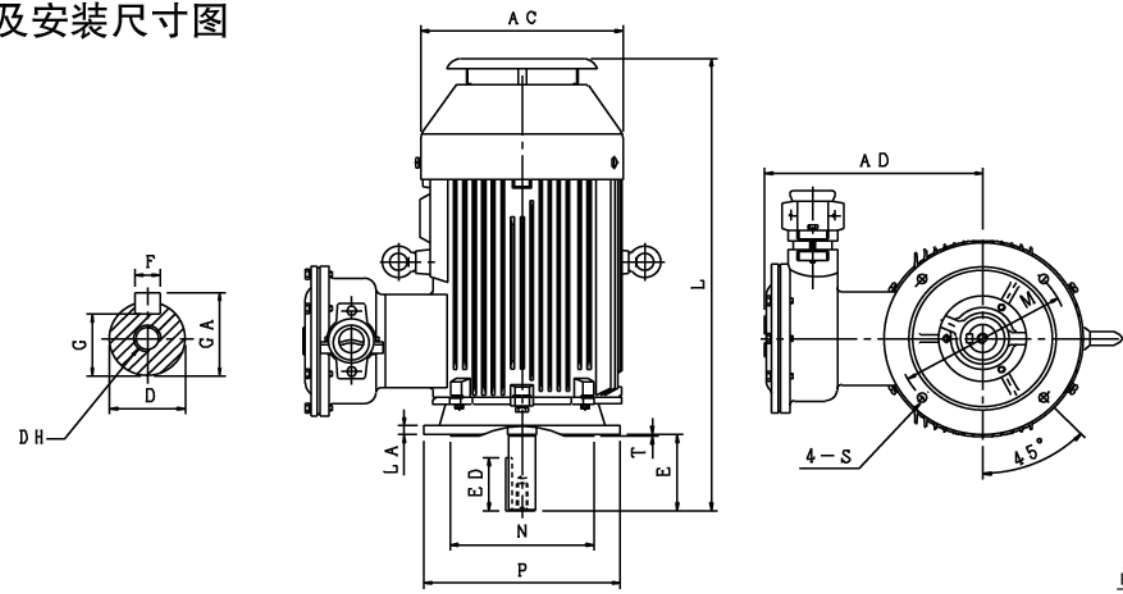
注: 安装联轴器或皮带轮请利用轴端攻牙压进迫入, 禁止以外力敲打轴端安装
轴径 D 公差: F#63M~112M J6
法兰 N 公差: J6

Note: install the coupling and pulley please use tapping into a forced into the shaft end, tapping shaft end installed by external force is prohibited
Tolerance of shaft end Diameter D: F#63M~112M J6
Tolerance of flange Diameter N: J6

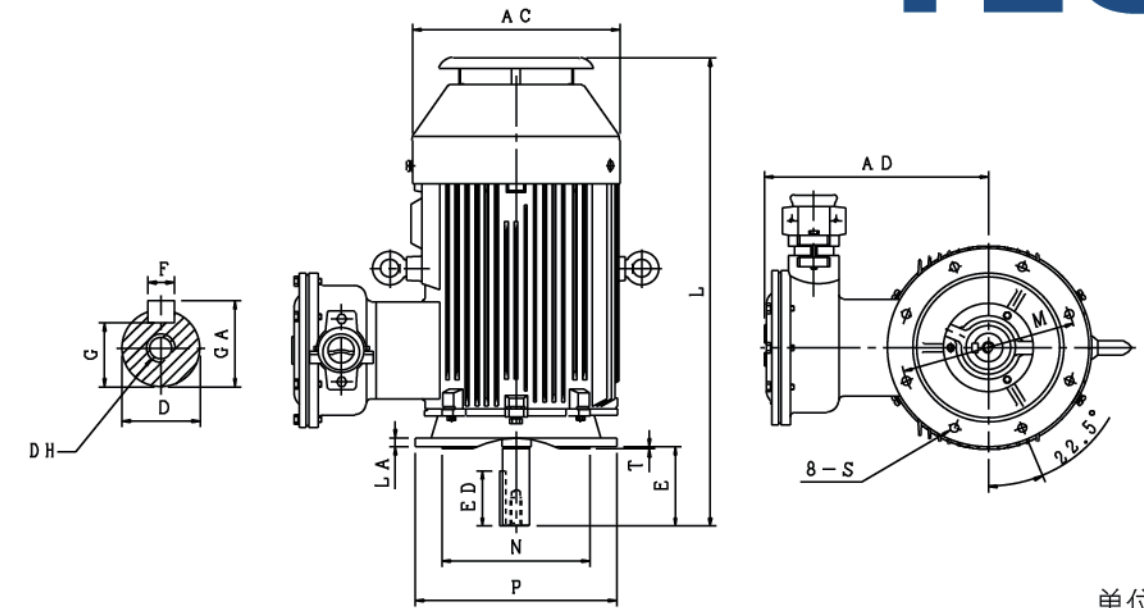
外形图 Outline

外形及安装尺寸图

安装方式: IMV1 (IM 3011)



单位: mm



单位: mm

输出 Output (kW)				机座号 FRAME SIZE	法兰尺寸 FLANGE DIMENSION						AC	AD	L
2P	4P	6P	8P		LA	M	N	P	S	T			
5.5	5.5	3	2.2	132S	14	265	230	300	14.5	4	270	320	630
7.5	7.5	4	3	132M									
11	11	7.5	4	160M	15	300	250	350	18.5	5	325	360	780
15	15	5.5	5.5	160L									
18.5	18.5	—	—	180M	18	350	300	400	18.5	5	360	370	841
22	22	15	11	180L									
30	30	18.5	15	200L	18	350	300	400	18.5	5	400	445	910
37	37	22	15	200L									

机座号 FRAME SIZE	轴端 SHAFT EXTENSION							轴承 BEARING		The max. OUTER DIAMETER of INLET CABLE
	D	E	ED	F	G	GA	DH	驱动端 DE	非驱动端 ODE	
132S	38	80	61	10	33	41	M12X28	6208-2RZ	6208-2RZ	Ø22
132M										
160M	42	110	86	12	37	45	M16X36	(6209-2RZ)	(6209-2RZ)	Ø28
160L								6309-2RZ	6209-2RZ	
180M	48	110	87	14	42.5	51.5	M16X36	(6211-2RZ)	(6211-2RZ)	Ø28
180L								6311-2RZ	6211-2RZ	
200L	55	110	93	16	49	59	M20X42	(6212-2RZ)	(6212-2RZ)	Ø37

注: 安装联轴器或皮带轮请利用轴端攻牙压进, 禁止以外力敲打轴端安装
 轴径 D 公差: F#132S~180L K6 F#200L M6
 法兰 N 公差: J6
 轴承 () 内为 2P 转速

Note: install the coupling and pulley please use tapping into a forced into the shaft end, tapping shaft end installed by external force is prohibited
 Tolerance of shaft end Diameter D: F#132S~180L K6 F#200L M6
 Tolerance of flange Diameter N: J6
 Bearing No. in () is for 2p

输出 Output (kW)				机座号 FRAME SIZE	法兰尺寸 FLANGE DIMENSION						AC	AD	L	轴扩展 SHAFT EXTENSION					
2P	4P	6P	8P		10P	LA	M	N	P	S				T	D	E	ED	F	G
—	37	—	18.5	—	225S	18	400	350	450	18.5	5	450	465	958	60	140	109	18	53
45	45	30	22	—	225M														
55	55	37	30	—	250M	20	500	450	550	18.5	5	500	500	1055	60	140	109	18	53
75	75	45	37	—	280S														
90	90	55	45	—	280M	22	600	550	660	24	6	560	550	1162	65	140	109	18	58
110	110	75	55	45	315S														
132	132	90	75	55	315M	25	600	550	660	24	6	630	630	1340	65	140	109	18	58
37	37	22	15	—	315M														
37	37	22	15	—	315M	25	600	550	660	24	6	630	630	1420	65	140	109	18	58
37	37	22	15	—	315M														

机座号 FRAME SIZE	轴承 SHAFT EXTENSION		轴承 BEARING		The max. OUTER DIAMETER of INLET CABLE
	GA	DH	驱动端 DE	非驱动端 ODE	
225S	64	M20X42	6313-2RZ	6312-2RZ	Ø37
225M	59	M20X42	(6312-2RZ) 6313-2RZ	(6312-2RZ) 6312-2RZ	
250M	64	M20X42	(6313/V2) 6314/V2	(6313/V2) 6313/V2	Ø40 / 2-Ø37
280S	69	M20X42	(6314C3) 6317C3	(6314C3) 6314C3	
280M	79.5	M20X42	(6314C3) 6317C3	(6314C3) 6314C3	Ø58 / 2-Ø40
315S	69	M20X42	(6316/V2) NU319	(6316/V2) 6319C3	
315M	85	M20X42	(6316/V2) NU319	(6316/V2) 6319C3	

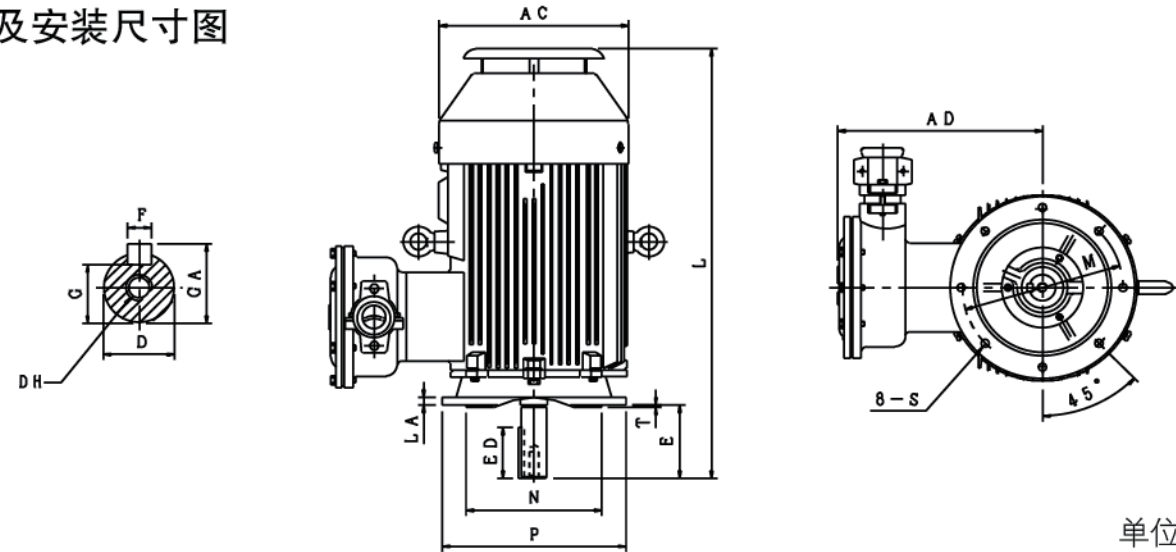
注: 安装联轴器或皮带轮请利用轴端攻牙压进, 禁止以外力敲打轴端安装
 轴径 D 公差: F#225S~315M M6
 法兰 N 公差: F#225S~280M J6 F#315S~315M JS6
 轴承 () 内为 2P 转速

Note: install the coupling and pulley please use tapping into a forced into the shaft end, tapping shaft end installed by external force is prohibited
 Tolerance of shaft end Diameter D: F#225S~315M M6
 Tolerance of flange Diameter N: F#225S~280M J6 F#315S~315M JS6
 Bearing No. in () is for 2p

外形图 Outline

外形及安装尺寸图

安装方式: IMV1 (IM 3011)



单位: mm

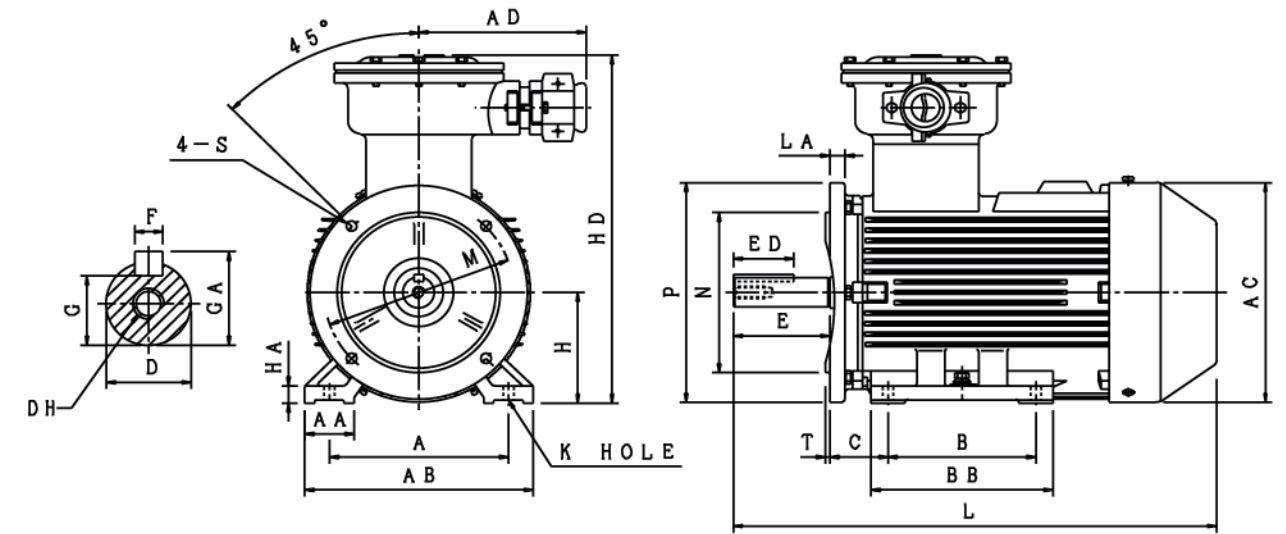
输出 Output (kW)					机座号 FRAME SIZE	法兰尺寸 FLANGE DIMENSION						AC	AD	L	轴扩展 SHAFT EXTENSION		
2P	4P	6P	8P	10P		LA	M	N	P	S	T				D	E	ED
160	—	—	—	—	315L	25	600	550	660	24	6	630	705	1510	65	140	109
200	160	110	90	75													
—	200	132	110	90	355S	740	680	800	24	6	750	725	1600	75	140	110	
(185)	(185)	160	132	(90)													95
(220)	—	—	—	—	355M	740	680	800	24	6	750	725	1680	75	140	110	
250	(220)	(185)	160	110													95
(280)	—	—	—	—	355L	740	680	800	24	6	750	725	1780	75	140	110	
315	(280)	(220)	(185)	160													95
—	(315)	(220)	(185)	160													

机座号 FRAME SIZE	轴端 SHAFT EXTENSION				轴承 BEARING		The max. OUTER DIAMETER of INLET CABLE
	F	G	GA	DH	驱动端 DE	非驱动端 ODE	
315L	18	58	69	M20X42	6316/V2	6316/V2	Ø58 / 2-Ø40
	22	71	85	M20X42	NU319	6319C3	
355S	20	67.5	79.5	M20X42	6319/Z2	6319/Z2	Ø58 / 2-Ø40
	25	86	100	M24X50	NU322	6322/Z2	
355M	20	67.5	79.5	M20X42	6319/Z2	6319/Z2	Ø58 / 2-Ø40
	25	86	100	M24X50	NU322	6322/Z2	
355L	20	67.5	79.5	M20X42	6319/Z2	6319/Z2	Ø58 / 2-Ø40
	25	86	100	M24X50	NU322	6322/Z2	

注: 安装联轴器或皮带轮请利用轴端攻牙压进迫入, 禁止以外力敲打轴端安装
 轴径 D 公差: F#315L~355L M6
 法兰 N 公差: JS6

Note: install the coupling and pulley please use tapping into a forced into the shaft end, tapping shaft end installed by external force is prohibited
 Tolerance of shaft end Diameter D: F#315L~355L M6
 Tolerance of flange Diameter N: JS6

安装方式: IMB35 (IM 2001)



输出 Output (kW)				机座号 FRAME SIZE	法兰尺寸 FLANGE DIMENSION						A	AA	AB	AC	AD	B	BB	C
2P	4P	6P	8P		LA	M	N	P	S	T								
0.75	0.55	0.37	0.18	80M	12	165	130	200	12	3.5	125	34	165	165	180	100	130	50
1.1	0.75	0.55	0.25															

机座号 FRAME SIZE	轴端 SHAFT EXTENSION											轴承 BEARING		The max. OUTER DIAMETER of INLET CABLE	
	H	HA	HD	K	L	D	E	ED	F	G	GA	DH	驱动端 DE		非驱动端 ODE
80M	80	10	320	10	320	19	40	25	6	15.5	21.5	M6X16	6204-2RZ	6204-2RZ	Ø22

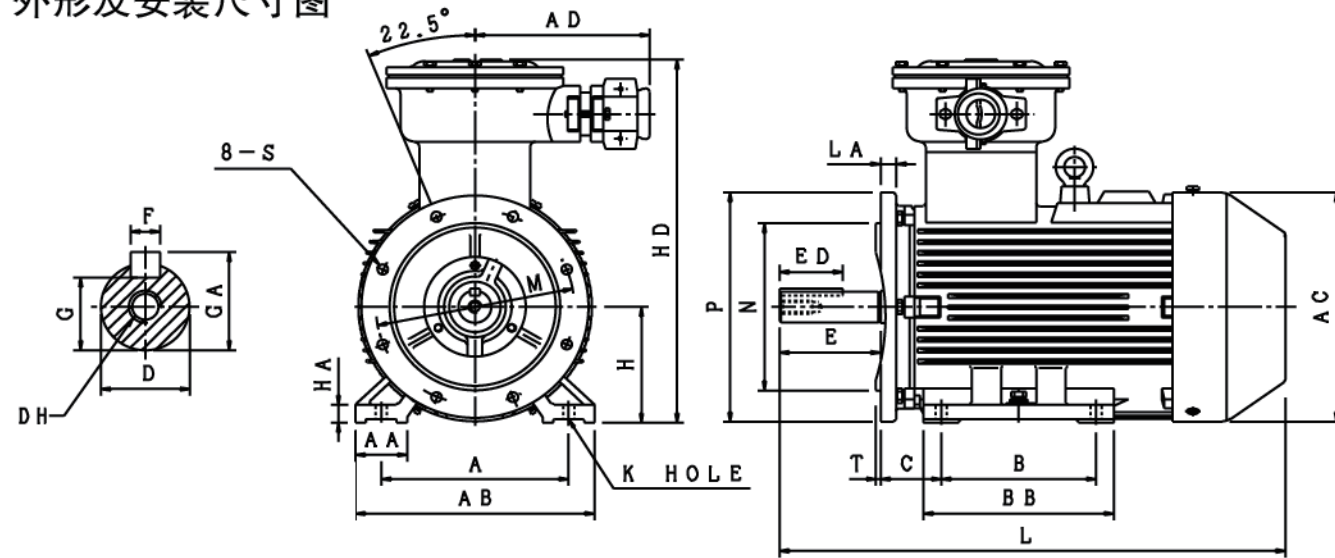
注: 安装联轴器或皮带轮请利用轴端攻牙压进迫入, 禁止以外力敲打轴端安装
 轴径 D 公差: F#80M J6
 法兰 N 公差: J6

Note: install the coupling and pulley please use tapping into a forced into the shaft end, tapping shaft end installed by external force is prohibited
 Tolerance of shaft end Diameter D: F#80M J6
 Tolerance of flange Diameter N: J6

外形图 Outline

外形及安装尺寸图

安装方式: IMB35 (IM 2001)



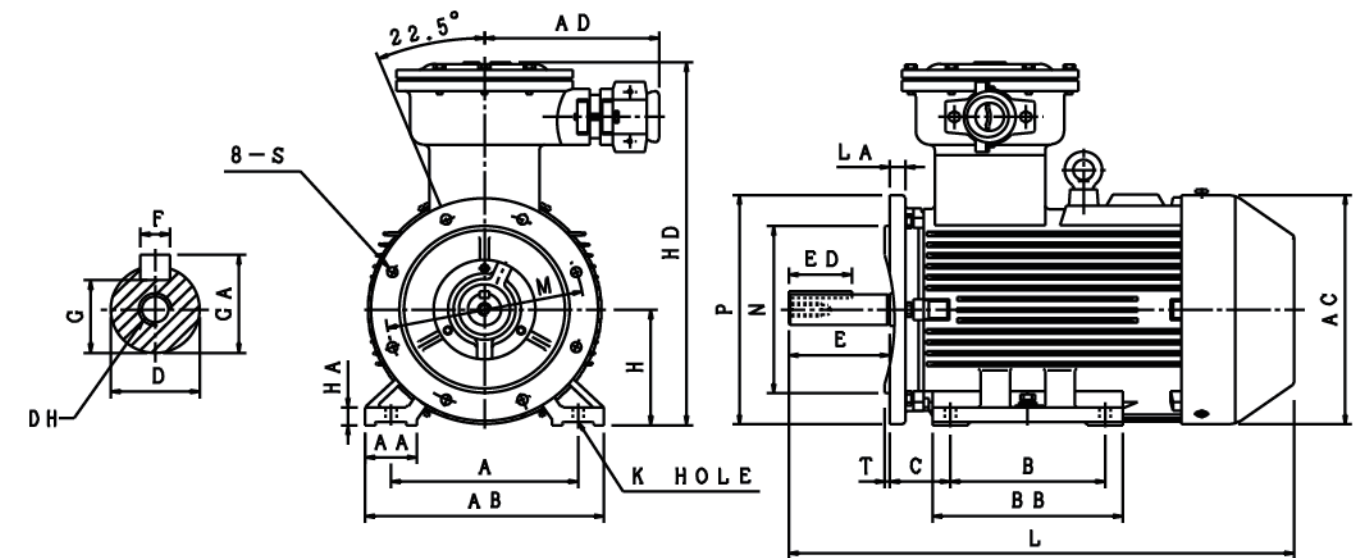
单位: mm

输出 Output (kW)					机座号 FRAME SIZE	法兰尺寸 FLANGE DIMENSION						A	AA	AB	AC	AD	B	BB	C
2P	4P	6P	8P	10P		LA	M	N	P	S	T								
—	37	—	18.5	—	225S	18	400	350	450							286	355	149	
45	45	30	22	—	225M	18	400	350	450							311	380	149	
55	55	37	30	—	250M	20				18.5	5	406	80	490	500		349	420	168
75	75	45	37	—	280S	22	500	450	550			457	85	545	560	300	368	445	190
90	90	55	45	—	280M												419	500	
110	110	75	55	45	315S	25	600	550	660	24	6	508	120	640	630	400	406	550	216
132	132	90	75	55	315M												457	680	

机座号 FRAME SIZE	H	HA	HD	K	L	轴端 SHAFT EXTENSION						轴端 BEARING		The max. OUTER DIAMETER of INLET CABLE	
						D	E	ED	F	G	GA	DH	驱动端 DE		非驱动端 ODE
225S	225	28	690	18.5	888	60	140	109	18	53	64	M20X42	6313-2RZ	6312-2RZ	Ø37
225M					888	55	110	88	16	49	59	M20X42	(6312-2RZ)	(6312/2RZ)	
250M	250	30	730	24	965	60	140	109	18	53	64	M20X42	(6313/V2)	(6313/V2)	Ø40 / 2-Ø37
					65								109	18	
280S	280	35	810	24	1010	65	140	109	18	58	69	M20X42	(6314C3)	(6314C3)	Ø58 / 2-Ø40
280M					75								110	20	
315S	315	45	1020	28	1320	65	140	109	18	58	69	M20X42	(6316/V2)	(6316/V2)	Ø58 / 2-Ø40
					1350								80	170	
315M	315	45	1020	28	1350	65	140	109	18	58	69	M20X42	(6316/V2)	(6316/V2)	Ø58 / 2-Ø40
					1380								80	170	

注: 安装联轴器或皮带轮请利用轴端攻牙压进迫入, 禁止以外力敲打轴端安装
 轴径 D 公差: F#225S~315M M6
 法兰 N 公差: F#225S~280M J6 F#315S~315M JS6
 轴承 () 内为 2P 转速

Note: install the coupling and pulley please use tapping into a forced into the shaft end, tapping shaft end installed by external force is prohibited
 Tolerance of shaft end Diameter D: F#225S~315M M6
 Tolerance of flange Diameter N: F#225S~280M J6 F#315S~315M JS6
 Bearing No. in () is for 2p



单位: mm

输出 Output (kW)					机座号 FRAME SIZE	法兰尺寸 FLANGE DIMENSION						A	AA	AB	AC	AD	B	BB	C
2P	4P	6P	8P	10P		LA	M	N	P	S	T								
160	—	—	—	—	315L	600	550	660				508	120	640	630	400	508	680	216
200	—	—	—	—															
—	160	110	90	75	355S	740	680	800	24	6		610	116	740	750	500	560	696	254
(185)	—	—	—	—															
(200)	—	—	—	—	355M	740	680	800	24	6		610	116	740	750	500	560	696	254
—	(185)	160	132	(90)															
(220)	—	—	—	—	355L	740	680	800	24	6		610	116	740	750	500	560	696	254
250	(220)	(185)	160	110															
—	(220)	200	160	132	355L	740	680	800	24	6		610	116	740	750	500	560	696	254
(280)	—	—	—	—															
315	(280)	(220)	(185)	160	355L	740	680	800	24	6		610	116	740	750	500	560	696	254
—	315	250	200	(185)															

机座号 FRAME SIZE	H	HA	HD	K	L	轴端 SHAFT EXTENSION						轴承 BEARING		The max. OUTER DIAMETER of INLET CABLE	
						D	E	ED	F	G	GA	DH	驱动端 DE		非驱动端 ODE
315L	315	45	1020	28	1490	65	140	109	18	58	69	M20X42	6316/V2	6316/V2	Ø58 / 2-Ø40
					1520	80	170	141	22	71	85	M20X42	NU319	6319C3	
355S	355	52	1080	28	1570	75	140	110	20	67.5	79.5	M20X42	6319/Z2	6319/Z2	Ø58 / 2-Ø40
					95	170	142.5	25	86	100	M24X50	NU322	6322/Z2		
355M	355	52	1080	28	1650	75	140	110	20	67.5	79.5	M20X42	6319/Z2	6319/Z2	Ø58 / 2-Ø40
					95	170	142.5	25	86	100	M24X50	NU322	6322/Z2		
355L	355	52	1080	28	1750	75	140	110	20	67.5	79.5	M20X42	6319/Z2	6319/Z2	Ø58 / 2-Ø40
					95	170	142.5	25	86	100	M24X50	NU322	6322/Z2		

注: 安装联轴器或皮带轮请利用轴端攻牙压进迫入, 禁止以外力敲打轴端安装
 轴径 D 公差: F#315L~355L M6
 法兰 N 公差: JS6

Note: install the coupling and pulley please use tapping into a forced into the shaft end, tapping shaft end installed by external force is prohibited
 Tolerance of shaft end Diameter D: F#315L~355L M6
 Tolerance of flange Diameter N: JS6